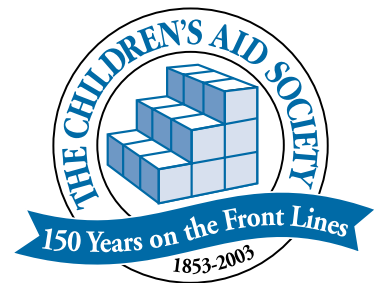


Children's Services: Today and Tomorrow

MEETING THE EVOLVING NEEDS OF CHILDREN AND FAMILIES



Mission

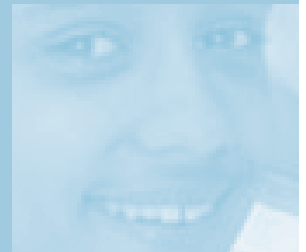
The mission of The Children's Aid Society is to ensure the physical and emotional well being of less advantaged children and families. To fulfill our mission, we provide each child with the support and opportunities needed to become a happy, healthy and successful adult.

The Children's Aid Society (CAS) was founded in 1853, 150 years ago, with largely the same mission. Then, the Society endeavored to help the thousands of children living in New York's streets. Today, we serve 150,000 New York City children and their families each year, without regard to race, religion, nationality or socio-economic status.

Our services address every aspect of a child's life, from infancy through adolescence, and provide the guidance and resources a family needs to ensure its children's well being. CAS programs include health (medical, dental and mental health care), adoption and foster care, counseling, preventive services (including violence and substance abuse prevention for teens), summer camps, winter respite camps for the disabled, recreation, the arts, education, college scholarships and job training, and emergency services, among many others. We work in the metropolitan New York area, in venues as varied as neighborhood centers, camps, public schools, in children's own homes, health clinics, a mobile dental van, homes for homeless families with children and in the family courts. We also serve as technical assistance advisors for replications and adaptations of our specialized services in teen pregnancy prevention and community school projects in cities throughout the United States.

With 38 sites in New York and an annual operating budget of over \$70 million, The Children's Aid Society today is one of the country's oldest and largest non-sectarian child and family welfare agencies. The Children's Aid Society is a leader in innovative, cost-effective programs; CAS spends over ninety-one cents out of every dollar directly on services to children.

The Children's Aid Society is a tax-exempt organization under Section 501(c)(3) of the Internal Revenue Code of 1986. Federal Tax I.D. 13-5562191





Contents

Mission	IFC
Letter from the Chairman	2
Report of the CEO / Children's Services: Today and Tomorrow	4
Volunteer Action	10
Community Partners	11
CAS Timeline: On the Front Lines for Children for 150 Years	12
Treasurer's Report	20
Donations, Grants and Bequests	22
Life Members	23
Guardian Members	24
Bequests	36
The Charles Loring Brace Society	37
Foundation and Corporate Donors	38
Tributes	40
Toys, Books and In-Kind Gifts	42
The Children's Aid Society's Services	44
The Children's Aid Society's Locations	45
Trustees, Local Board Members and Key Staff	46
Note from the Executive Director	49

Letter from the Chairman

As I take time to reflect upon the many wonderful achievements of The Children's Aid Society over the past 150 years, I must also acknowledge that the year just past has been trying for many families across the country. New York City has been hit especially hard, by the emotional and financial effects of 9/11, a downturn in the economy and reductions in government services. Indeed, the services offered by the caring staff at The Children's Aid Society have been in greater demand than before.

The Board and its executive committee decided that in tough times like these we need more than ever to be there for the children. We recognize that many families who lack any other safety net need us as a first and last resort. With that in mind, our C.E.O. and Board were determined to ensure preservation of essential services — this was not the time to “pull in the reins.”

Therefore, CAS was proud to serve more than 150,000 families and children without reductions to any critical programming or services. In fact, the agency was able to expand its outreach — particularly in areas such as the South Bronx, where there is a dire need for the community health, early childhood, foster care and other services offered at our Bronx Family Center. We enhanced much of our teen programming, including the addition of The Hope Leadership Academy, our adolescent leadership development program. We now offer an expanded tutoring and technology program to older school-age children at our Frederick Douglass Center in Harlem and have

restructured our College Prep and Support Program to include younger students, who will receive CAS support before and through college.

Following an expansion at Wagon Road, CAS' Westchester campus, there has been a sharp increase in the use of camp facilities year-round. Children and teens have traveled to Wagon Road for weekend

retreats, team-building adventures and day trips. More children than ever have taken part in the Respite Program, a year-round camping experience for physically and developmentally disabled children whose families would otherwise not be able to afford such specialized programming.

As the New York City public school system undergoes dramatic changes in structure and operations, we have increased advocacy efforts to policymakers to raise understanding about the total needs of children and families as experienced in our 10 community schools in New York City. We have also extended our influence beyond New York City through technical assistance to national and international adaptation sites and proudly announce that more than 150 schools are using our model.

The reason that we have been able to meet increasing demands even in difficult times is thanks in large part to our many dedicated supporters, who give generously and encourage others to do the same. Foundations, corporate donors and individuals have provided the much-



The reason that we have been able to meet increasing demands even in difficult times is thanks in large part to our many dedicated supporters, who give generously and encourage others to do the same.



appreciated financial support that allows more children access to CAS services. Also important is the volunteer support offered by individuals who donate their time, whether to raise funds, work one-on-one with children or join a committee supporting one of the agency's numerous services.

I am grateful to the leadership and generosity of the Board of Trustees, our Advisory Council and Associates Council, all of whom have once again offered steady stewardship and valuable support. I applaud our 760 full-time staff—led by Philip Coltoff, our C.E.O. and C. Warren Moses, our Executive Director—and the hundreds of part-timers and volunteers who lend a hand in our 38

different locations in New York City and Westchester County. The work that they do every day improves the physical and emotional well being of thousands of children in New York City.

We understand the important role that CAS plays in neighborhoods throughout New York City, and are deeply honored to have such a responsibility. I am proud to serve with such dedicated professionals, Board members and volunteers and I salute them all.

Edgar Koerner
Chairman

Report of the CEO

Children's Services: Today and Tomorrow

Two years after the attacks of September 11th, 2001, we remain at a time of great national and international insecurity. Our airwaves and screens are filled with news of wars, unrest and potential terrorist plots. We live in a world that is more uncertain than before, and this makes daily life ever more difficult for children and families – especially children and families struggling in poverty.

How do we accept the reality of our new existence without fostering insecurity and pessimism in children and teens who don't yet have a firm fix on the future? How do we promote a hopeful worldview to young people and parents who see only hopelessness all around them?

These are some of the questions we face as we mark the 150th anniversary of The Children's Aid Society. Now, as always, we respond not only by providing emergency food, clothing and housing but also inventive services that enable children and families to succeed. In our early days, we created the first free school lunch program, the first day care center for children of working women, the first school dental clinic. In more recent times, we opened the first Head Start center, the first sun-safe playground, the first community schools in New York City. The list is long, not because we want to be "first," but because our front-line work must constantly evolve to meet the needs of children and families.

Now, in the middle of 2003 and in the midst of caring for tens of thousands of children, we see disturbing trends that demand our attention. As we look forward, I

want to share my analysis of these trends while also showing how some of our newest programs respond creatively and compassionately in the communities we serve.

Increasing Poverty and Homelessness

After the longest period of economic prosperity in American history, it is shameful that New York City – the engine for enormous wealth – is home to increasing numbers of poor, hungry and homeless children. For example, 71% of Latino children born in 2000 were born into poverty, and 59.5% of African American children. The rate for Latino children had been decreasing since 1996, but is now on the rise again, and the rate for African American children has been rising since 1998.¹

The number of homeless children and families has also grown substantially. In 1998, 4,558 families were in the Department of Homeless Services' system on an average day; today it is 9,211. Forty-three percent of homeless individuals are children.² Families are staying longer in shelters and fewer families are finding permanent housing to end their homelessness.³ Concurrently, food pantries report significant increases in demand.

Joblessness is obviously a key factor in these trends. Unemployment rates have spiked in all boroughs of New York City, with the Bronx leading at 9.2%, followed by



■¹Citizens' Committee for Children of New York, Inc., *Keeping Track of New York City's Children 2002*, p. 44. ■²NYC Department of Homeless Services, June 24, 2003. ■³Citizens' Committee, *Keeping Track 2002*, pp. 66, 67. ■⁴Citizens' Committee, *Keeping Track 2002*, p. 41. ■⁵Family Education Network, from U.S. Census Bureau data, 1996 Survey. ■⁶Citizens' Committee, *Keeping Track 2002*, p. 8. ■⁷US Bureau of Labor Statistics Press Release, "Employment Characteristics of Families in 2002" (released July 9, 2003), table 5. ■⁸The Children's Aid Society, "The Human Cost of Waiting for Child Care: A Study," 1999.

Brooklyn at 8.3% and Manhattan at 7.5%,⁴ all far above the national numbers.

The increase in poverty, especially among children, is a mandate we have not, cannot and will not ignore. With some key economic indicators remaining grim, we do not anticipate quick or easy gains among our families in the near future. Until recently, the government provided a safety net in the form of benefits and programs for the poorest families, but many programs have been cut or eliminated and still others are being phased out.

Community-based organizations like The Children's Aid Society have increasingly had to fill the gap. CAS has assumed a vitally important role as a "social safety net," helping children and families face life's challenges before they are overwhelmed by circumstances that are often beyond their control. Broadly speaking, our services encompass health, education, foster care and adoption and recreation. Within these broad outlines are more than 200 programs, each meeting critical needs. Even in times of budget cuts and fiscal restraint, we continue to develop successful programs to scale, to create new programs to

meet emerging needs and to share our strategies with peers and policymakers. As the face of poverty continues to change in New York City, the following trends will inform our service delivery system for years to come.

Support for Families Led by Single Parents

Increasing numbers of children across the nation are living with a single mother. The numbers have been rising slowly and steadily for 100 years, but they took a big leap between 1970 and 1980 and have continued to climb.⁵

With larger numbers of families headed by a single mother, and with greater numbers of those mothers in the workforce (currently 58% of all mothers in New York City⁶ and nearly 72% nationally⁷), support services are more important than ever. Mothers cannot work without good quality child care and after-school programs for their children, yet good care is expensive and subsidized care is insufficiently available to fill the need. In 1999, CAS estimated that at least 40,000 children in New York were in need of subsidized child care and the number could now be as high as 100,000.⁸ With poverty increasing, unemployment growing and rents going up, fewer families can afford the cost of good



In 1999, CAS estimated that at least 40,000 children in New York were in need of subsidized child care and the number could now be as high as 100,000.⁸



quality care. The need is equally great for excellent after-school programs, so school-age children have safe, supervised places to play and learn after school. Crimes committed by and against youth triple in the hours between 3 and 8 pm, making the after-school hours the most dangerous for them,⁹ so the need for programming during these hours is critical.

The Children's Aid Society's school-based and community-based services are designed to meet this need and to point the way for other agencies. We serve not only single mothers but also grandmothers raising grandchildren as well as all other types of parents, guardians and caregivers. On a typical school and work day, our after-school programs and our child care, nursery school and early childhood programs serve close to 15,000 children.

The need for these services is especially great in the Bronx, which has the city's highest level of child poverty – 42%.¹⁰ In the past year, we opened our 11th licensed child care center in our new Bronx Family Center on Southern Boulevard in the South Bronx. This center offers caring and well-qualified staff and best practices in early childhood education while also linking children and families to our vast array of services. This “point of entry” can lead them to our constellations of services in health, mental health, benefits advocacy, educational support and more.

Our staff are also alert and sensitive to the immediate needs of the families we serve, ready to provide emergency assistance, and it is our wide web of support that makes the difference. I think of Rebekah Andrews¹¹ and her two kids, ages 8 and 3. Rebekah, a single mother, is able to work because her children are in our child care, after-school and summer camp programs. She lost her full-time job in the health field last year and while inbetween

jobs, fell behind in her rent. We used funds from *The New York Times* Neediest Cases Fund to save the family from eviction, but after the crisis passed we continued to provide support. Rebekah is now moving forward again – working part-time for the city while studying at City College at night to become a better provider for her family. In a letter she wrote, “The Children's Aid Society has been our second home for years.”

Concern for the Health of Children

Walk into any schoolroom in the city and the epidemic of obesity becomes clear. Even in loose shirts and baggy jeans, you can see how many children are heavy – and statistics confirm this impression. In New York, 43% of the city's public elementary school population is overweight or obese.¹² Across the country, obesity among children between the ages of 6 and 11 has quadrupled from less than 4% in the 1960s to more than 15% in 2000.¹³

Childhood obesity can cause a cluster of serious medical problems and is high on the list of concerns that require our immediate attention. To that end, we are launching a research project in early obesity prevention for children between the ages of 2.5 and 4. Working with children and parents in Early Head Start classes in Washington Heights, our health coordinators and home-based educators will model new attitudes and approaches to food, eating and exercise. Our goal: preventing early onset of adult diabetes, high blood pressure, high cholesterol and exacerbation of asthma, while also promoting a life-long commitment to good health.

Another key issue is asthma, especially in East Harlem, which has the city's highest rate of pediatric asthma hospitalization.¹⁴ In P.S. 50,



⁹Newman, Sanford A., J.D., et. al. “America's After-School Choice: The Prime Time for Juvenile Crime, or Youth Enrichment and Achievement,” 2000. ¹⁰Citizens' Committee, *Keeping Track 2002*, p. 45. ¹¹Name changed to protect the family's identity. ¹²New York City Department of Health and Mental Hygiene, NYC Vital Signs, “Obesity Begins Early,” June 2003. ¹³Ibid. ¹⁴Citizens' Committee, *Keeping Track 2002*, p. 85. ¹⁵Citizens' Committee, *Keeping Track 2002*, p. 80. ¹⁶New York City Department of Health and Mental Hygiene, “Crotona-Tremont Neighborhood Health Profile,” 2000, p. 51. ¹⁷New York City Department of Health and Mental Hygiene, “Washington Heights-Inwood Neighborhood Health Profile,” 2000, p. 27.



one of The Children's Aid Society's community schools in East Harlem, 26% of the children have active asthma and

in the recent past a child died of asthma. In response to this clear and pressing need, we have built a school-based health clinic, hired medical staff and a community health educator, and provided individual and ongoing medical support to every single child and family with asthma while also training teachers and parents to spot early signs of the disease. Through a research partnership with Mt. Sinai Hospital, program outcomes are being tracked and evaluated. We are also working to promote preventive health school-

Central and East Harlem, which have much higher rates of low birthweight babies (11.9% and 11.7%) than the city as a whole (8.3%).¹⁵ The Crotona-Tremont area of the Bronx, where CAS' Bronx Family Center is located, has a rate of births to women under 20 years of age that is almost twice the city rate (16% vs. 8.6%).¹⁶ Washington Heights-Inwood, a neighborhood where we have established five of our community schools, also has a rate of births to women under 20 that is substantially higher (13%) than the city rate.¹⁷

To us, these trends articulate needs we can meet in cooperation with government and other agencies. Low birthweight babies are at great risk for medical and developmental

Our staff are also alert and sensitive to the immediate needs of the families we serve, ready to provide emergency assistance, and it is our wide web of support that makes the difference.



wide through our after-school nutrition, fitness and anti-smoking programs.

Child and maternal health is yet another focus. Many of our services are clustered in

problems, but through comprehensive, community-based intervention, this trend can be reversed. Through our Health Care Access Program, we link families to Medicaid or Child

Health Plus, allowing access to prenatal care. We are also expanding reproductive health and prenatal services in our Early Head Start programs and our school-based and community-based health clinics.

The Need to Reform Public Schools

New York City's public schools are in the throes of change, especially in terms of governance, curricula and educational philosophy. As their success is increasingly measured by test scores, schools are introducing more rigorous academic curricula, in some cases virtually to the exclusion of all other services.

While we support higher academic standards, we also believe very strongly that schools must do more to help children succeed, particularly in underserved communities. For the past 12 years, we have acted on this belief through our community schools program, which operates through a partnership with the Department of Education. The program started in Washington Heights, a rapidly growing northern Manhattan neighborhood that is home to increasing numbers of new immigrants from the Dominican Republic, Central America and Mexico. Our community schools network has grown to also include schools in East Harlem and the South Bronx.

Our community schools, which have been honored with numerous awards including the Peter F. Drucker Award for Nonprofit Innovation, offer an encyclopedic array of services. The list includes medical care (including acute care, preventive exams, immunizations, asthma management and adolescent medicine) as well as dental care and mental health (including family life and adolescent sexuality in middle and high school, and screening of adolescents for depression). The other key components are Parent Resource Centers (which provide English as a Second Language, GED classes, parent empowerment training and

workshops on how to support children's education) as well as extended-day programming that encompasses after-school academic, recreational, cultural and athletic opportunities, arts programming and financial literacy. We also provide facilitated enrollment in public health insurance, emergency services and client advocacy.

School-based health, mental health and social services make a lot of sense in poor urban communities, especially in a time when students have to work harder and score higher. Helping kids with their health and social problems enables them to focus on learning. And providing additional learning opportunities through our extended-day programming offers new avenues for success. Through our National Technical Assistance Center for Community Schools, we continue to promote our community school model to parents, educators and policymakers throughout the United States and around the world in 154 adaptation sites.

Another model that is being replicated across the nation is the Children's Aid-Carrera family life and adolescent sexuality program. Established in 1985, this program has been proven effective in reducing teen pregnancies and birth by a rigorous, scientific evaluation. Working with youth aged 12 to 15, this program, based at I.S.218 and I.S.90 in Washington Heights and at I.S.190 in the South Bronx, engages teens after school five days a week and on Saturdays during the school year. Because the program works with young people in school (and because youth who want to achieve academically are more likely to behave more responsibly), every effort is also made to help these children stay on track academically. In addition to statistically significant reductions in pregnancy and births and improved contraceptive use, teens in the program also had significantly better preparation for and participation in employment, made more college visits, used computers more frequently and had higher PSAT scores.





Looking Ahead

Despite our best efforts from 1853 to 2003, poverty persists. Yet just because there have always been poor families doesn't mean there always have to be. But

how do we promote positive social change, building bridges beyond the harsh and uncertain reality of our times to a more optimistic vision of the future?

First by being there, by providing services in the communities where the need is greatest, consistently with strength and energy, today as we have yesterday and will tomorrow.

Second, by fulfilling our mission, by giving children the support and opportunities they need to overcome obstacles and become happy, healthy and productive adults.

Third, by investing youth with self-esteem and resilience, through close attention to their social, academic and



career needs and through ongoing contact with mentors and caring adults.

Fourth, by helping parents provide better homes for their children, by assisting them in obtaining education and health care and giving them the skills to advocate for their families.

Fifth, through spirit-lifting, soul-satisfying participation in the arts and sports and through interaction with nature and the outdoors.

Sixth, by being an advocate in addition to a service provider, and always, regardless of risk, being the voice of children and families who are voiceless.

Most important, however, is our continuing belief in children, in their beauty, goodness and extraordinary potential. Our children demand nothing less.

Philip Coltoff
Chief Executive Officer

Most important, however, is our continuing belief in children, in their beauty, goodness and extraordinary potential. Our children demand nothing less.



Volunteer Action

The Children's Aid Society's volunteers come from all walks of life – they are parents of CAS kids, high school or college students, busy professionals and retirees – but they all share a common commitment to our children and to our communities. They show their devotion by participating in weekly mentoring and tutoring programs, coaching sports teams, taking children on outings, collecting toys at holiday times and raising money, to name a few of the many ways volunteers contribute to our mission.

Among our most dedicated volunteers are our Associates Council (AC) members. The Associates Council is the dynamic leadership arm of Children's Aid's volunteer force. The commitment of the AC members can be felt throughout the volunteer programs and throughout the agency, via their participation in every aspect of our work and their exciting fundraising events and activities.

Led by President **Heidi Thompson**, The Associates Council broke all records this year – for volunteer participation, fundraising and creativity. The AC initiated a new fundraising program, created in honor of the 150th anniversary by AC Treasurer **Maureen Nash**: the AC Annual Appeal. AC members participate in this grass roots campaign by asking friends and family to support their volunteer efforts through donations to CAS.

The Associates Council's fundraising efforts resulted in a grand year-end total of \$152,000 for CAS, including \$124,000 raised at the AC gala, besting all previous AC records. The funds support several programs, including the Neighborhood Youth Employment Program (NYEP), a unique job training and employment program that works with adolescents in foster care and with juvenile offenders transitioning

out of a boot camp facility as well as volunteer-based programs such as UKARE (Uptown Kids Are Reading Everyday).

Sandy Ahman, AC Chairman, was named the local winner of the NFL's Community Quarterback Award last November. The award honors individuals who demonstrate volunteer leadership, dedication and commitment to the community; the award recognized her many contributions as a CAS volunteer.

December's **Miracle on Madison Avenue** was the most successful Miracle ever. Over 200 volunteers, including AC members, CAS staff and family and a large group from Bovis Lend Lease, sprinkled their smiles along Madison Avenue from 57th Street to 86th Street, handing out candy, balloons and shopping guides. Volunteers also staffed the Taste of Madison Avenue, Borghese, BMW, raffle and CAS tents on the Avenue. In addition, the **Miracle** kickoff party, **Red**, chaired by AC Advisor **Juliann Cannilla**, was a new addition to the fall lineup of events that will become a welcome annual feature of this December fundraiser.

Derby Day, in May, initiated by then-AC President **Lolita Jackson** eight years ago, saw 180 volunteers gardening, cleaning and painting at 16 CAS sites in Manhattan, the Bronx, Staten Island and Westchester. Lolita will become a member of the Board of Trustees of The Children's Aid Society in October. Volunteers, joined by children and staff from the sites, also organized a food pantry and ran a community carnival on Derby Day. UBS supported the event with funds and two teams of volunteers and Metropolitan Lumber donated much-needed supplies.

Volunteers provide an invaluable resource for our children.



Community Partners



Partnerships enable The Children's Aid Society to stretch resources, test new ways of working, learn from the experiences of others and, most importantly, to expand our impact on children's lives.

The Children's Aid Society's community school model is based entirely on partnerships, and this year there are over 100 partners. The Society could not do much of its work without the hundreds of community agencies and organizations that ensure that our services are as complete and effective as possible.

Although too numerous to mention individually, our community partners include city, county, state and federal agencies and departments; hospitals; health providers; colleges and university graduate schools of social work, nursing, medicine and public health education; mental health providers; community development groups; service societies; parent groups; police; youth-serving agencies; child and family welfare coalitions; school boards; housing alliances; food cooperatives; and scores of others agencies, businesses, church groups, professional associations, task forces and volunteers. The Society is also proud to be part of the Children's Miracle Network (in fact, we are its only non-hospital affiliate in the nation), and a founding member of both the Child Welfare League of America and the Coalition for Community Schools.

We are also founding members of the Boys & Girls Clubs of America (B&GCA) and work closely with the Clubs' local, state, regional and national staffs to increase the number of public school partnerships. A new juvenile justice initiative begun last year with B&GCA progressed better than we had initially

hoped. With the New York State Alliance of Boys & Girls Clubs, as well as the New York Office of Children and Family Services, CAS is providing aftercare for youth released from detention centers to help reintegrate them productively into their communities and reduce recidivism. We are seeing a significant decline in this important area. In addition, we partner with B&GCA at our Dunlevy Milbank Center's Technology Playground.

Two of our newest partners are the Federal Center for Substance Abuse Prevention and OASAS, New York State's Office of Alcoholism and Substance Abuse Services, with which we have created the Downstate Prevention Resource Center. DPRC helps prevention service providers in the five boroughs as well as Rockland and Westchester counties with evaluation tools, outlines of successful programs, curricula and information on training services to help those affected by 9/11.

The arts at Children's Aid are also made possible through wonderful partnerships. We are grateful to Alvin Ailey American Dance Theater and American Ballet Theatre for making our school-based dance programs possible. Harman International Industries, Inc. gives our students great pleasure as well as meaningful instruction with its *harman: how to listen* program in our schools. Mention must also be made, and thanks given, to the National Arts Club, for all the help it has provided over the years with our children's art exhibitions and chorus performances as well as volunteer and board receptions.

With our partners, in all that we do, we can make a greater difference for the city's children.



The Children's Aid Society: On the Front Lines for Children for 150 Years

The following timeline tracks historic highlights of The Children's Aid Society's 150 years, tracing the changes in poverty in New York City along with the evolution of our innovative programs and services.

The First 100 Years

1853

■ Charles Loring Brace and a group of social reformers founded The Children's Aid Society in New York City. To help an estimated 30,000 homeless children, Brace began the "Orphan Train Movement," removing children from the streets and placing them with farm families in the West. This social experiment is now recognized as the beginning of foster care in the United States.

1854

■ CAS opened the first lodging house for homeless boys, along with the first Boys' Club rooms, which were connected to the lodging house.

1855

■ The Newsboys' Bank started taking deposits to encourage boys to save money instead of wasting it on gambling.



■ To reduce the incidence of crime, vagrancy and prostitution, CAS opened its first industrial school for poor children and initiated the first free school lunch program in the United States.

1863

■ CAS established a program that became the forerunner of PTAs, in which teachers helped mothers learn better ways to care for their families.

■ CAS opened the first Girls' Lodging Home, a shelter for homeless girls between the ages of 14 and 18.

1864

■ CAS established an industrial school for boys on East 38th Street. The school schedule included morning schoolwork, a simple lunch and an afternoon carpentry class.

1873

■ Through a gift from Mrs. Anson Phelps Stokes, CAS leased and equipped a large house on Staten Island, establishing the first "Fresh Air"-type vacations for city children and mothers. The rural surroundings offered an escape from hot city streets and stifling tenements.

1884

■ CAS developed summer health and vacation homes in Brooklyn's Bath Beach and Coney Island to help poor, sick children recover from illness. The sea air was seen as an effective cure for the diseases and malnourishment of city life in unsanitary and overcrowded tenements.



1872

■ With support from *The New York Times*, CAS employed teams of nurses and physicians to visit sick children in tenements, establishing the model for Visiting Nurses Services. This pioneering work began after 1,000 children under the age of 5 died each week during a summer of extreme heat.

■ The New York State legislature passed the first compulsory education law, for which CAS actively advocated.

1874

■ CAS operated 21 day schools and 13 evening schools.

1876

■ CAS established its first kindergarten in the 18th Street School. All teachers were licensed by the State or the New York City Board of Education.

1881

■ CAS opened the first day nursery for infants and children of working women. The nursery was urgently needed as New York City was becoming a major manufacturing center and more women were joining the workforce.

1890

■ The Rhinelander Industrial School opened after the Rhinelander sisters, Serena and Julia, donated property and funds to CAS. The building was designed by Calvert Vaux (co-designer of Central and Prospect Parks) and George Radford.

■ 20 CAS Industrial Schools offered vocational education to children.

1891

■ CAS opened the Greenwich Village Center.

Consistently from its earliest years, The Children's Aid Society established services and programs that became "firsts" as our front line work evolved to meet the needs of children and families.



1894

■ The Brace Memorial Farm School opened at Valhalla in Westchester County. It provided basic agricultural training for older boys, enabling CAS to place them with farm families through the Orphan Train Movement.

1898

■ CAS established the first day school in New York for disabled children. The youngsters traveled by omnibus to the Rhinelander School on East 88th Street.

1901

■ CAS employed the first school nurse in New York City for the Italian School, located in Greenwich Village. By 1909, every CAS school had its own school nurse.

1902

■ CAS established the first free classes in New York City for children with mental illnesses.

1906

■ CAS opened the first free school dental clinic in the United States in the 52nd Street School. By 1913, there was a dental clinic in every CAS school.

1909

■ CAS established the Elizabeth Milbank Anderson Home for convalescent and anemic children in Chappaqua, New York.

1912

■ CAS opened the Goodhue Center on Staten Island.

1919

■ CAS began nutrition work after a Health Department survey of New York City school children revealed that 19% were malnourished.

1923

■ CAS created a formalized foster care department, which included permanent adoption services, bringing an end to the Orphan Train Movement.

■ The Milbank Home for Convalescent Boys opened at Valhalla, NY.

1928

■ Services expanded to African-American children and families with the addition of the Columbus Hill Neighborhood Center on West 63rd Street and Utopia Children's House in Harlem.

During the late 19th and early 20th centuries, CAS established programs and facilities to improve the health of children and provide opportunities for the disabled.

1933

■ CAS established Homemaker Services in cooperation with the Junior League, with Eleanor Roosevelt serving as its first chairwoman. The new service provided a “mother’s helper” for families where the mother was ill or had to leave the home. It also laid the groundwork for the establishment of a wide variety of CAS preventive services, which utilize counseling and outreach to avoid family breakdowns because of abuse, domestic violence, illness or other crises.

1936

■ Counseling and employment services for teenagers began in CAS community centers.

1939

■ CAS organized the Service Bureau for Negro Children to help find foster homes for African-American children.

1940

■ The U.S. Committee for the Care of European Children asked CAS to help place British children in foster homes in New York City suburbs.

1944

■ Each CAS center throughout New York City helped returning servicemen gain access to local and government agencies and readjust to civilian life.

1946

■ The Sloane Center on East 6th Street in Manhattan, constructed in 1890, underwent renovation and became a special education and recreation center.

1951

■ A new orthodontic treatment program was added to the dental services offered at the Lord Memorial Building on East 45th Street in Manhattan. The new three-story building also provided health screening, adoption and foster care and Homemaker Services.

In 1953,
The Children's
Aid Society
celebrated
its 100th
Anniversary



Second Century of Service Begins

1956

■ CAS opened Wagon Road Camp in Chappaqua, New York to serve youngsters with a wide range of physical illnesses and disabilities. The camp offered special summer programs for disabled children and winter respite weekends for their families.

■ In Manhattan, the East Harlem Children's Center opened.

1965

■ CAS and the Child Care and Adoption Service merged, providing counseling and other services to children and their natural parents or their adoptive families.

■ The first Head Start classes in New York City began in CAS centers.

1973

■ The City of New York City selected CAS to conduct the first Preventive Service Project to explore whether intensive social services can prevent foster care placements or ensure an earlier return of a child to his or her home.

■ CAS established licensed mental health services in five neighborhood centers, the first to be integrated with ongoing social work programs.



By the early 1950s, The Children's Aid Society began to feel the impact of the "baby boom." Neighborhood centers saw large increases in the numbers of 6- to 10-year old members.

1958

■ Dunlevy Milbank Center opened in Central Harlem, replacing the Harlem Boys' Club. The new building featured a swimming pool, gymnasium, large lounges, game rooms and health clinics.

■ Frederick Douglass Community Center opened in Central Harlem, in the Frederick Douglass Houses.

1970

■ Free breakfast programs served food at the Sloane, Dunlevy Milbank and East Harlem Centers. Drug prevention programs began at the Frederick Douglass, Dunlevy Milbank, East Harlem and Rhinelander Centers.

1971

■ CAS started its first sex education programs for teens, parents and staff.

1974

■ A bilingual after-school Learning Center opened to help children improve academic achievement.

1976

■ CAS sponsored Project LIVE (Learning through Industry and Volunteer Educators), a corporate tutoring program for 7th and 8th grade students.



1979

■ Staff underwent training in early recognition of child abuse.

1981

■ CAS started a mediation service called PINS (Persons in Need of Supervision) to divert troubled youth from Family Court.

1982

■ CAS and the Community Council of Greater New York sponsored a conference on hunger and malnutrition, which led to the Family Supper Feeding Program for 5,000 children.

1983

■ CAS was the first agency to provide health care, educational and recreational activities to homeless children in the city's biggest welfare hotel.

1984

■ CAS launched the Teen Pregnancy Prevention program at Dunlevy Milbank Center in Harlem. The program, directed by Dr. Michael A. Carrera, uses a holistic approach that helped youth develop personal goals and the desire for a productive future.

1986

■ CAS opened the Drew Hamilton Day Care Nursery in Central Harlem.

1988

■ The CAS mobile health unit began services for homeless children at the Prince George Hotel. After the welfare hotel closed, it brought medical and dental care to thousands of children each year around the city.

1989

■ CAS opened the Pelham Fritz transitional apartments, a shelter for homeless families, in partnership with the Junior League.

1990

■ CAS established the Stern National Adolescent Sexuality Training Center to replicate the success of the CAS-Carrera Teen Pregnancy Prevention program at sites around the country.

1992

■ CAS helped establish P.S. 5 and I.S. 218 in Washington Heights, CAS' first public community schools. Created in partnership with the New York City Board of Education, the schools continue to provide extended-day programs, health, dental, mental health and social services, as well as educational opportunities for adults to complement the core academic curriculum of each school.

1993

■ CAS and its partners completed the renovation of the first apartments in the new Carmel Hill Project. This comprehensive community rebuilding effort brought stability to a troubled block in Harlem by improving housing conditions, empowering tenants and connecting families to CAS and government services.

1994

■ The CAS community school initiative expanded to include I.S. 90, a public middle school in Washington Heights. The National Technical Assistance Center for Community Schools opened to help schools across the country adapt the CAS model.

1995

■ CAS opened the Taft Day Care Nursery in Harlem.

1996

■ A new after-care program, City Challenge, served teens released from juvenile detention centers. It was one of the first community re-entry programs based on a partnership between New York State and a community-based organization.

■ P.S. 8 in Washington Heights joined the CAS community school program.

1997

■ CAS school-based Immigration Centers began offering citizenship classes, legal counsel and emergency assistance as a result of new welfare reform legislation.

1998

■ CAS opened a community health facility with Mount Sinai Hospital at the Dunlevy Milbank Center in Harlem, providing a wide range of pediatric, adolescent and reproductive women's health care services. The medical facility continues to serve residents of the nearby Pelham Fritz Apartments and Carmel Hill buildings.

■ CAS initiated its Health Care Access Program, a proactive outreach effort to enroll children and parents in public health insurance programs. Initially based at P.S. 8, the program expanded its reach through a New York State Department of Health contract. CAS now leads a coalition of agencies that together have enrolled nearly 15,000 individuals.

■ P.S.152 in Washington Heights and the Manhattan Center for Science and Mathematics, a high school in East Harlem, joined the CAS community school program.

1999

■ CAS released a report on the urgent need for subsidized child care in New York City, "The Human Cost of Waiting for Child Care."

■ CAS launched its Economic Empowerment Initiative, a financial literacy program for children and adults, based at P.S. 8 in Washington Heights.

2000

■ P.S. 50, the ninth CAS community school, opened with a focus on health, especially asthma prevention and treatment.

■ The Bronx Family Center opened, offering preventive and foster care services to the Bronx community. The center's menu of services soon grew to include medical and dental care and on-site child care.

■ CAS launched a national advertising campaign in partnership with the Advertising Council to promote greater awareness of the benefits of full-service community schools.

2001

■ Through the efforts of CAS' National Technical Assistance Center for Community Schools, more than 100 community school adaptation sites were operating in schools across the country and around the world.

■ CAS introduced the Family Wellness Program, with the goal of breaking the cycle of family violence. Case management and advocacy continue to serve all family members and help mothers and children find safety and reestablish their independence.

■ CAS introduced its second dental van through a partnership with Columbia University's School of Dentistry and Oral Surgery.

■ CAS, in partnership with the New York State Alliance of Boys & Girls Clubs and the state Office of Children and Family Services, launched a new community re-entry program for adjudicated youth returning from upstate residential facilities.

9/11

In the wake of the terrorist attack on the World Trade Center, CAS immediately created a World Trade Center Relief Team and reached out to victims' families and displaced workers with short-term emergency relief and long-term support services. With the help of many funders, CAS offered case management and mental health services, cash assistance, benefits assistance, counseling, child care and scholarship help.



2002

■ CAS created The Hope Leadership Academy, a multi-faceted approach to help adolescents and their families cope with post-traumatic stress and reduce the risk of youth violence. Leadership skills for youth and young adults between the ages of 14 and 24 and substance abuse prevention are key components of this growing program, located in Central Harlem.

■ CAS launched the Downstate Prevention Resource Center, in partnership with the state Office of Alcoholism and Substance Abuse Services and the Federal Center for Substance Abuse Prevention. The center continues to provide technical assistance for prevention service providers and others in need of new models for reaching out to people affected by 9/11.

■ As part of its anniversary, CAS sponsored “Kids See Free Day” in March with support from the Citigroup Foundation, allowing the first 150 New York City children to enter eight different New York museums free of charge on that day.

■ In May, CAS children produced a Social Issues Fair to celebrate the agency’s 150th anniversary, performing original theatrical plays depicting issues with which the agency has been involved in the past 150 years.

Now, in 2003, as we see disturbing trends that demand our attention, we continue to respond creatively and compassionately in the communities we serve.



■ Intel and CAS opened New York’s first Intel Computer Clubhouse in Harlem at the Frederick Douglass Center to help children gain the necessary skills to succeed in the workforce.

■ CAS expanded its community school partnerships in the South Bronx, adding C.S. 61/ I.S.190 and I.S. 98 as CAS community schools.

2003

■ February 6, The Children’s Aid Society launched its 150th anniversary celebration with a gala at the home of Trustee Christopher Jeffries. CAS premiered its new public service advertisement featuring the voice of CAS “kid” Al Pacino at the event, as well as on local television. The mayor proclaimed the day Children’s Aid Society Day and the Empire State Building was illuminated blue and white in honor of CAS.

■ CAS joined the New York City Department of Education and The After-School Corporation as a host agency for the New Beginnings program, for high school youth who need a different environment than public school to get their educations back on track or start on an employment path.

Treasurer's Report

Fiscal Year 2003 was a year of some special note since it followed the most unusual year in our history, a year that included the events of September 11, 2001. The record will show that the Society expended during FY2003, a sum of \$4,800,000 for services related to the aftermath of 9/11 — mental health counseling for children and families affected by either death, injury or loss of job. Special year-round programs for adolescents, including the Hope Leadership Academy, as well as for school-age children, called "Overcoming Obstacles," were important sustaining programs in many of our centers and community schools. The costs for these operations were held outside of our operating budget and used funds specifically designated for such purposes.

Overall operating expenses of \$69,362,682 show an increase of 6 percent over FY2002. The two largest increases were in our Family, Child and Community Services, where a government contract allowed us to serve more court-referred youngsters in community-based programs and in Health Services. Under Health Services, the substantial increase of \$1,700,000 represented a significant expansion in our Health Care Access Program and an enlargement of our mental health practice, our Bronx health and dental clinic, and some targeted expansion in our school-based clinics. These programs were in large measure funded with additional income from a variety of government and private sources. We are most pleased with our partnership with both the Mount Sinai Medical Center and the Montefiore Medical Center in the delivery of these most important health

services to a poor and largely uninsured population.

Administrative expenses were less than 9 percent of our total operating costs (which do not include World Trade Center Disaster Relief and capital improvement expenditures).

Operating Income of \$62,073,494 increased by 3.7 percent over the previous year exclusive of our World Trade Center Disaster Relief Fund. Our shortfall of \$7,289,188 was in the usual way met by withdrawals from reserves. The total amount withdrawn from reserves, not including World Trade Center Disaster Relief Fund, but including funds for capital improvements, was about equal in both Fiscal 2003 and 2002.

As reported in our Chairman's Stewardship Report in 2002, it was our executive and Board's decision not to reduce essential services to children during this period of governmental reduction and economic downturn. If anything, our clients needed our assistance more during the difficult year that passed.

Once again, I thank the many individuals, foundations and corporations that support our work. I also want to thank our many friends who have provided the Society with deferred gifts and, of course, all the members of our Board of Trustees, Advisory Council and Associates Council for their continuous and unstinting help.



Sheila Baird
Treasurer



Operating Expenses for the Year Ending	June 30, 2003	June 30, 2002
Adoption and Foster Care	\$13,263,008	\$12,791,980
Children's Centers	20,932,056	20,135,993
Family, Child and Community Services	9,030,861	8,556,530
Health Services	9,211,216	7,510,479
Camps	1,629,648	1,420,894
Community Schools	8,592,874	8,409,723
Management and General	4,630,700	4,489,660
Development	2,072,317	2,125,949
Grand Total (1)	\$69,362,682	\$65,441,208
Operating Income for the Year Ending	June 30, 2003	June 30, 2002
Restricted and Unrestricted Income	17,753,160	\$17,284,149
Public and Government Support	36,498,482	34,665,406
Fees	7,821,852	7,906,733
Grand Total	\$62,073,494	\$59,856,288
Surplus / (Deficit) (2)	(\$7,289,188)	(\$5,584,920)

(1) These figures do not include approximately \$750,000 in capital improvements for Fiscal Year 03 and approximately \$2,500,000 in Fiscal Year 02 for capital improvements.

(2) These figures do not include income or expenses related to the World Trade Center Relief efforts, which totaled approximately \$8.8 million in Fiscal Year 02 and \$4.8 million in Fiscal Year 03.

The net assets as of June 30, 2003 (pending final audit) are approximately \$245 million, which includes restricted and unrestricted reserves, Society-owned buildings and land, and other miscellaneous assets.

Fiscal Year 2002 is based on audited financial statements.

Fiscal Year 2003 is based on preliminary audit results.



Donations, Grants & Bequests

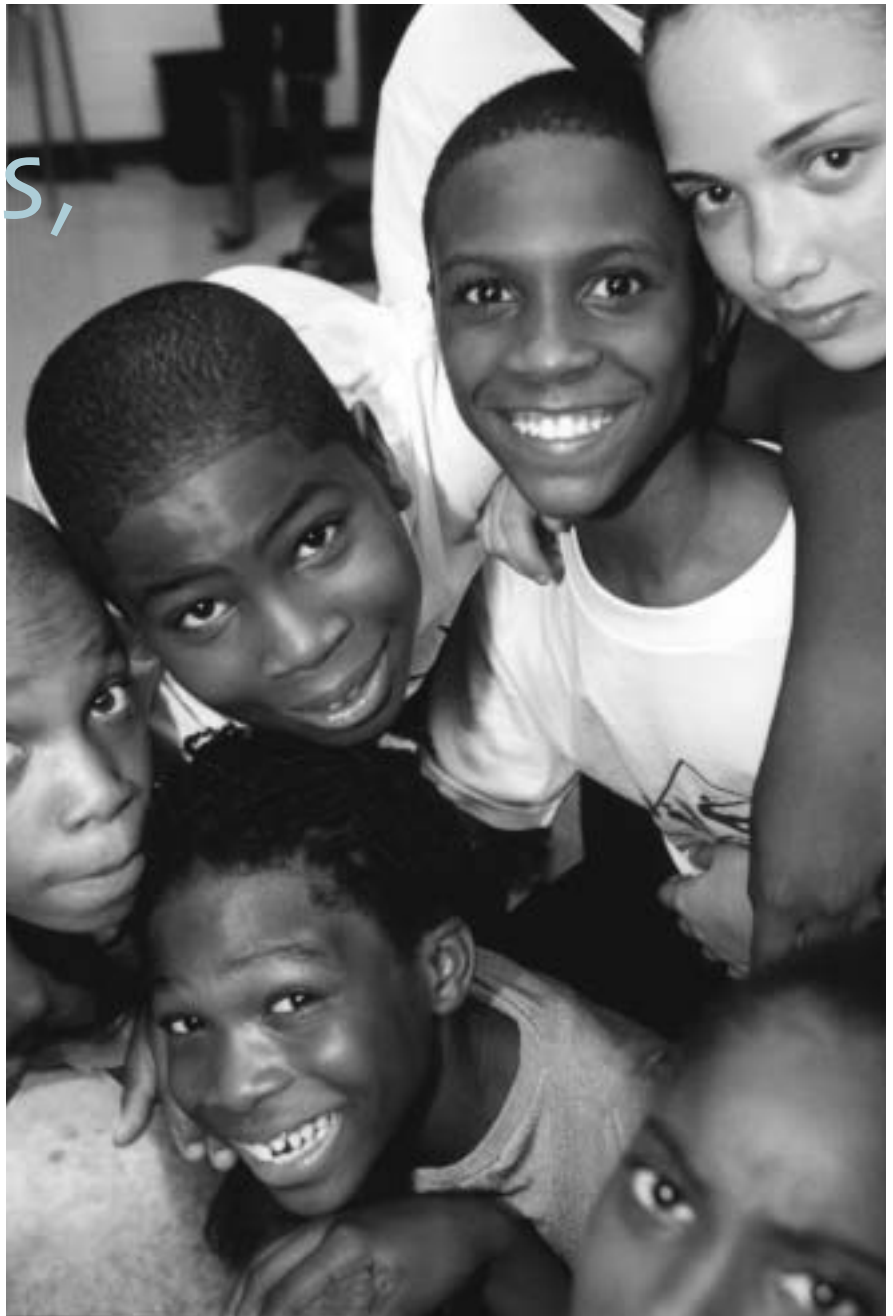
For 150 years, the innovations of The Children's Aid Society have been made possible by the exceptional generosity of countless contributors. In this report, we acknowledge the gifts of:

- thousands of individuals who are our Life Members, Guardian Members and Charles Loring Brace Society members,
- hundreds of foundations and corporations that support our Annual Fund,
- hundreds of annual donors of toys for the holidays and other in-kind gifts,
- those of you who have made your gift a tribute to friends and loved ones, and
- those whose earlier generosity through a bequest or charitable trust has given us support today.

Although they are not listed separately, we acknowledge also those who have continued to support the ongoing WTC relief work of the Society.

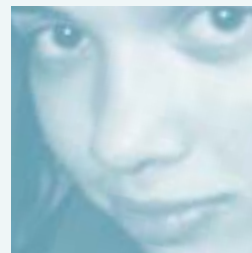
If you would like to know more about the different ways to help children through The Children's Aid Society, please go to www.childrensaidsociety.org and learn how to make a donation, how to include the Society in your will, how to send us stock certificates, how to set up a charitable gift annuity or trust, or how to give us toys and books.

We thank each and every one of you who have shared your good fortune with our children.



"The best thing is that The Children's Aid Society was there for me every step of the way."

— Deborah Johnson,
January, 2000,
New York Times
Neediest Cases



Life Members

The Children's Aid Society extends its most grateful thanks to its Life Members, who have made cumulative lifetime donations to the Society in excess of \$25,000. The Society is fortunate to have the generous support of such dedicated friends, who make possible our most innovative programs.

Diamond Life Members \$1,000,000 + cumulative

Judy and Jamie Dimon
Mr. and Mrs. George A. Kellner
Susan and Stephen F. Mandel, Jr.
Mrs. Milton Stern
Jean and Robert Stern

Emerald Life Members \$500,000 + cumulative

Ezra Kaplan
Susan and Ronald H. Kaufmann
Mr. and Mrs. Edward M. Lamont

Platinum Life Members \$250,000 + cumulative

Iris and Richard Abrons
Desmond G. FitzGerald
Christopher M. Jeffries
Beth and Ira Leventhal
Martha Berman and Robert Lipp
Mr. and Mrs. Stowe C. Phelps
Roger C. Ravel
Melvin R. Seiden and Janine Luke
Marilyn and James Simons
Rosalie K. Stahl
Mr. and Mrs. Richard M. Waterman
Mr. Dietrich Weismann
Anonymous (2)

Gold Life Members \$100,000 + cumulative

Mrs. Bernard Aronson
Sheila Baird
Sandra Atlas Bass
Christopher J. Carrera
Patricia Thornton and Jeffrey Cohn
Philip Coltoff and Lynn Harman
Dr. and Mrs. John Falencki
Mr. and Mrs. Robert M. Gardiner
Mr. and Mrs. John S. Griswold
Catherine Redlich and Robert Horwitz
Edgar and Eileen Koerner
Mr. and Mrs. Vincent A. Mai
Mr. and Mrs. Alan Roberts McFarland
Martha B. McLanahan
Mr. and Mrs. Anthony Neidecker
Adams H. Nickerson
Pedro R. Ortiz

Mr. and Mrs. Charles J. Roussel
Arthur F. and Georgianna P. Smith
Mr. and Mrs. John W. Spurdle, Jr.
Mr. and Mrs. Michael E. Stern
Mary Elizabeth Walsh
Anonymous (2)

Silver Life Members \$50,000 + cumulative

Linda and Philip Andryc
Karen and David Ash
Susanna and Jason Berger
Mr. and Mrs. Peter Blum
Marc Broxmeyer
Mr. and Mrs. Henry J. Bruton
Mr. and Mrs. Stephen Burke
Sabra C. Turnbull and Clifford N. Burnstein
Mr. and Mrs. George Carballo
Mr. and Mrs. John V. Cioffi
Carol O. Collins
Diana Dent
Hester Diamond
Mr. and Mrs. Stanley F. Druckenmiller
Mimi and Richard Fischbein
Thomas Gambino
Mr. and Mrs. Murray Gartner
Mr. and Mrs. Maurice R. Greenberg
Mr. and Mrs. Herbert W. Gstalder
Peter Hanson
Nancy and Douglas Horsey
Charles O. Hoyt
Mrs. Frederick Hurd
Martin E. Kaplan
Catherine Kellner
Mr. and Mrs. Andrew Klavan
Jeffrey M. Krauss
Kathleen A. Lally
Ursula G. and Thomas J. LaMotte
David N. Levin
Lindsey McCrum
Lucille Burkhardt-Moses and Dr. Campbell Moses
Mr. and Mrs. Jerry Lee Nelson
Charlotte E. Prince
Aimée and David Rhum
James P. Riley
Mr. and Mrs. Mark J. Rosasco
Mr. and Mrs. John M. Roth
Mr. and Mrs. Peter Rugg
Mr. and Mrs. Wesley W. Sparks

James H. Vaughn
Anonymous (5)

Bronze Life Members \$25,000 + cumulative

Mr. and Mrs. Joseph P. Adams, Jr.
Katharine S. Almy
Mr. and Mrs. C. Michael Armstrong
Mrs. Hamilton Fish Armstrong
Jody and John Arnhold
Mr. and Mrs. Emanuel Ax
Mr. and Mrs. Edward S. Babbitt, Jr.
Mrs. Bernt Balchen
Mr. and Mrs. Henry L. Belber
Mr. and Mrs. James E. Beloyianis
Mr. and Mrs. Robert Benton
Lucy Helen Betz, Mary Hanley and Andre Betz
Dike Blair
Mildred Brussel-Smith
Mr. and Mrs. Kenneth Carmel
Mr. and Mrs. Hays Clark
Claudia Cohl
Margo and Roger Coleman
Samuel M. Convissor
Mr. and Mrs. Michael Daniel
Clyde P. Davis
Stephen J. De Luca
Roberta D. Bowman and Steven A. Denning
Barbara J. Dent
Mr. and Mrs. David S. C. Dobell
Mr. and Mrs. Richard C. Dresdale
Mr. and Mrs. Mark M. Edmiston
Mr. and Mrs. Philip Elenko
Susan M. Coupey and James R. English
Lisa and Brian Enslow
Mr. and Mrs. Lawrence D. Feldman
Mr. and Mrs. John Fouhey
Myrrha O. Frankfurt
Arthur S. Friedman
Gary J. Gabriel
Joseph A. Galluccio
Edward T. Gardner III
Madeline Einhorn Glick
Mr. and Mrs. Edward B. Goodnow
Pauline Gray
Patricia and Stanley Grayson
Mr. and Mrs. Marshall M. Green
Joyce and Glenn Grossman
Maeve and Andrew Gyenes
Russel T. Hamilton
Mary and Peter S. Heller
Jacqueline and David Irwin
Mr. and Mrs. Aftab Islam
Truda C. and C. Lincoln Jewett
Hilda Kent
Laura and Marc Klein
Melissa Berman and Richard Klotz
Ann J. Kugel
Ferris Olin and Mitchell Leon
Naida S. Lessin
Mr. and Mrs. Edward C. Lord
Ethel K. Marran
Richard E. Meyer
Charlotte Milman
Priscilla Natkins and Seth Novatt
Jonathan O'Herron
Mr. and Mrs. Felix A. Orbe
Susan L. Orkin
Mr. and Mrs. Frederic W. Parnon
Nasimeh Alikhani and Theodore Petroulas
Mr. and Mrs. Ira Pittelman
Dorothy E. Weaver and Ethan J. Podell
Mr. and Mrs. Robert Prosnitz
Susan Renner-Smith
Amy Roth
Theresa Lang and Scott St. Marie
Mr. and Mrs. Franklin R. Saul
Amy and Charles Scharf
Virginia M. and Edward M. Sermier
John I. Shaw, Jr.
Beverly Sommer
B. Mark Smith
David F. and Ellen C. Stein
Richard B. Stothers
Laurie Tisch Sussman
Alexander Tedeschi
Stephen A. Wakeman
Cynthia Arato and Daniel Weisberg
Elizabeth Dix Wheelock
Mr. and Mrs. Mark A. Willis
Richard E. Winter, M.D.
Richard and Elizabeth Witten
Barbara Wriston
Barbara and David Zalaznick
Anonymous (4)

Guardian Members

The Society acknowledges with profound thanks the Annual Giving support of its Guardian Members listed below, as well as that of numerous Associate Members not listed because of space limitations, and the thousands of other contributors who support our work and our children throughout the year. We are very grateful for their generosity. *Please note that gifts made through family foundations or organizations may be listed on page 38, under Foundation and Corporate Donors.*

Chairman's Circle (\$100,000+)

Judy and Jamie Dimon
Christopher M. Jeffries
Ronald H. and Susan Kaufmann
Mr. and Mrs. George A. Kellner
Marilyn and James Simons

President's Circle (\$50,000+)

Iris and Richard Abrons

Benefactors (\$25,000+)

Gary J. Gabriel
Mr. and Mrs. Charles J. Roussel
Mr. Dietrich Weismann

Stewards (\$15,000+)

Patricia Thornton and Jeffrey Cohn
Philip Coltoff and Lynn Harman
Dr. and Mrs. John Falencki
Ezra Kaplan
Kathleen A. Lally
Mr. and Mrs. Edward M. Lamont
Martha B. McLanahan
Charlotte Prince
Mr. and Mrs. David F. Stein
George Winston
Anonymous

Guarantors (\$10,000+)

John D. Bertuzzi
Sabra C. Turnbull and Clifford N. Burnstein
Carol O. Collins
Kathleen Fisher
Mr. and Mrs. Robert M. Gardiner
Mr. and Mrs. Murray Gartner
Karin and Stephen Kessler
Edgar and Eileen Koerner
Jeffrey M. Krauss
Ann J. Kugel
Elaine Nadel and Richard E. LaMotta
Mr. and Mrs. Vincent A. Mai
Mr. and Mrs. John M. Roth
Amy L. Kiell and Harvey M. Schwartz
Mr. and Mrs. Richard M. Waterman
Anonymous

Sponsors (\$5,000+)

Mr. and Mrs. C. Michael Armstrong
Karen and David Ash



Lisa Limer and Ernesto Ugarte Astete
Mr. and Mrs. Robert Benton
Dike Blair
Mr. and Mrs. Henry J. Bruton
Anne Jeffries Citrin and Jacob Citrin
Richard M. DeMartini
Hester Diamond
Lisa and Brian Enslow
Mr. and Mrs. Thomas Franeta
Cynthia Kaplan and David D. Froelich
Caroline Gentile
Laura and Daniel A. Gold
John S. Griswold
Russel T. Hamilton
Peter Hanson
Alexis and David P. Hollander
Nancy and Douglas Horsey
James E. Jordan, Jr.
Bruce Eric Kaplan
Anthony D. Korner
Constance and Harvey M. Krueger
Ursula G. and Thomas J. LaMotte
Mr. and Mrs. Spencer Scott Marsh, III
S. Kurt Menner
Mr. and Mrs. Anthony Neidecker
Adams H. Nickerson
Pedro R. Ortiz

Evgenia Peretz
Mr. and Mrs. Michael D. Peterson
Nasimeh Alikhani and Theodore Petroulas
Mr. and Mrs. Ira Pittelman
Marcelle and Andrew S. Rosen
Amy Roth
Mr. and Mrs. Peter Rugg
Tacho Sandoval
Mr. and Mrs. Peter H. Schuck
Virginia M. and Edward M. Sermier
Judith C. Lewent and Mark Shapiro
Drs. Niki and Rodger Silverstein
Susan Lyall and Hans P. Utsch
Joyce and Raymond Vastola
James H. Vaughn
Mr. and Mrs. Rodney B. Wagner
Randolph Weigner
Cynthia Arato and Daniel Weisberg
Mr. and Mrs. Eric C. Williamson
Kelly Hunter Black and Merrill Michael Windsor
Robert and Carol Wolf
Anonymous (2)

Patrons (\$2,500+)
Dr. Jeannette M. Anderson

* corporate matching gift program # indicates some portion of gift dedicated to WTC relief
Every attempt has been made to reflect accurately and completely the names of our generous contributors. We apologize for any errors or omissions, and will be happy to reflect in future publications any changes you may request.

Mrs. Hamilton Fish
Armstrong
Mr. and Mrs. Emanuel Ax
Mr. and Mrs. James E.
Beloyianis
Mr. and Mrs. Joshua Gregg
Berkowitz
Mr. and Mrs. David C.
Bigelow
Mr. and Mrs. Leonard
Blavatnik
Barbara R. Mendelson and
David W. Brody
Nancy and Richard S. Cohen
Carl H. Coleman
Margo and Roger Coleman
Mr. and Mrs. Michael Daniel
Diana Dent
Nora and Brian E. Dowd
Mr. and Mrs. Mark M.
Edmiston
Donald Erenberg
Dana Buchman and Thomas
Farber
Robert J. Fogel
Joseph A. Galluccio
Mr. and Mrs. M. Shawn
Goldak
Patricia and Stanley Grayson
Mr. and Mrs. Bruce Gutkin
Mary and Peter S. Heller
Eugene P. Johns
Charlotte L. Johnson
Mr. and Mrs. Andrew J.
Kaufmann
Melissa Berman and Richard
Klotz
Kate and Joel Kopp
Mr. and Mrs. Peter Lamm
Marta Jo Lawrence
Laura and Daniel Levin
David N. Levin
Mr. and Mrs. Victor Lewkow
Jean W. Lince
Katharine G. Frase and
Kevin P. McAuliffe
Mr. and Mrs. Alan Roberts
McFarland
Emily Abrahams and Louis
Menand
Melissa A. Meyer and Peter
D. Mensch
Jodi Richard and Dwight
Merriman
Heidi and Brian J. Miller
Nina Orville and Edouard
Nammour
Helen O'Donnell
David Orr

Mr. and Mrs. David Pauker
Mr. and Mrs. Stowe C. Phelps
Mr. Frank T. Pratt
Ms. Elizabeth Rotondi#
Joseph Saba
Mr. and Mrs. Andrew P.
Scheffer
Linda Z. Swartz and Jessica
W. Seaton
AOL Time Warner
Foundation
Avellino Family Foundation,
Inc.
Averick Philanthropic
Foundation
Mitchell A. Bacharach
The Bank of N. T. Butterfield
& Son Ltd.



R. Polly Leider and Elliot B.
Sloane
Mr. and Mrs. John W.
Spurdle, Jr.
Stephen A. Wakeman
Mr. and Mrs. Charles H.
Weiner
Howard E. Wille
Helen and Steven Woghlin#
Mr. and Mrs. Lap J. Wong
Barbara Wriston
Anonymous (3)

Mentors (\$1,000+)

Access Industries, Inc.
Jill Greenwald and Gregory
Scott Adams
Robin Aronow and Dennis
Adler
Maureen C. Healy and Gary
Alexion
All Stars Project, Inc.
Alumni Sports Enterprises, LLC
Employees of Amalgamated
Life Insurance Company
American Quality Cleaning
Corporation
Eugenia and David Ames
Jonathan Gentile Anderson
Hedwig C. Belin
Helene R. Benedetti
Mr. and Mrs. John C. Bengé
The Louis and Minette Berg
Charity Fund
The Judy and Howard
Berkowitz Foundation
Kenneth A. Berkowitz
Sandra Bernhard#
Henry L. Bertoni
John Lear Beyer
Rajeev Bhaman
Jamie and Matthew Bloom
Mr. and Mrs. Gilbert Boas
Mr. and Mrs.
Martin J. Bohan
Mr. and Mrs. Scott
Vincent Booth
W. Theodore Bourke
BrainStorm USA, LLC
Roxanne Brandt
Ann Brashares
L. Don Brown
Bull's Head Foundation, Inc.
Florence V. Burden
Foundation
Burke Family Foundation
Mr. and Mrs. John F.
Burlingame

C.A.L. Foundation, Inc.
The Victor and Clare C.
Battin Foundation
Nancy S. Calcagnini
Antoinette P. Cantore
Brenda and Kenneth Carmel
June and Michael Carrera
Castle Hill Apparel Inc.
Terrence M. Charles#
Alexandre H. Chemla
Young Cho
Donald Choi#
CIBC World Markets USA
Barbara Cirkva#
Clara G. Cist
Marcy Engel and Stuart M.
Cobert
Barbara and Bertram J. Cohn
Peter A. and Elizabeth S.
Cohn Foundation
James L. Collins
Timothy Comer#
Common Cents New York,
Inc.#
Lisa Paoella and Willard
Cook
Mr. and Mrs. John E. Cooney
Dr. Janet E. Hall and William
C. Copacino
Lisa D. Johnson and
Williams Cooper Cosby
Frank J. Coyne
Crawford-Doyle Charitable
Foundation
Nancy Wertsch and
Christopher Creaghan
Crew Cuts
Mr. and Mrs. Robert L.
Cunningham, Jr.
Laura and Timothy J. Curry
Daily News
Mr. and Mrs. Ronald F. Daitz
The Dammann Fund, Inc.
Mr. and Mrs. Pierre de Saint
Phalle
Albert M. DeFabritus
Roberta D. Bowman and
Steven A. Denning
Diesel U.S.A., Inc.#
The Diller-von Furstenberg
Family Foundation#
Dorothy H. and Sidney G.
Dillon
Suzanne DiPirro#
Diversified Marketing Group
Suzanne T. Donaldson
Caroline R. Donhauser
Mr. and Mrs. Thomas A.
Dowling

Judith Ann Deemer and Rex A. Licklider
 The Litwin Foundation, Inc.
 Liz Claiborne Foundation*
 Mr. and Mrs. Joseph D. Locker
 Christopher Lofting
 William F. Logan
 Jo Gramling Lopez
 Lord, Abbett & Co.*
 The Henry Luce Foundation Inc.*
 Dr. Joyce V. Lyons
 Lyons Township High School (IL)#
 James A. Macdonald Foundation
 Madison Square Garden, L.P.
 Marjorie Magner
 Manhattan Chamber of Commerce
 The Manhattan Resident Managers Foundation Inc.
 Kathleen H. Manna
 Maura Marcus
 Jeffrey R. Margolis
 Barbara and Richard E. Marsh
 Mr. and Mrs. Paul Marshall
 Mavi Jeans, Inc.#
 The Leonard Mayer Foundation
 Mr. and Mrs. Michael T. McClammy
 Margery and John McEown
 Gavin McFarland
 Mr. and Mrs. Raymond McGarrigal
 Amy L. and John T. McHugh
 Maria McBride-Mellinger and Brett C. Mellinger
 Alan W. Melville
 Metrovision Production Services, Inc.
 Ruth and Peter Metz Family Foundation, Inc.
 Larry Meyer
 William Blair Meyer, Jr.
 Enid and James Michelman
 Jeannette Miller
 Joanne and Jeffrey K. Miller
 Rosemary Gaynor McCown and Jonathan Miller
 Mr. and Mrs. Lowell A. Mintz
 Miss Cape May County Scholarship Foundation#
 Nancy L. Hengen and Henry P. Monaghan
 Monet Family Fund

Mr. and Mrs. Richard E. Mooney
 Mr. and Mrs. Garrett M. Moran
 Phyllis Stock-Morton and W. Scott Morton
 Mr. and Mrs. Charles H. Mott
 John J. Mulkern and Seung Ho Lee Fund
 Mr. and Mrs. Francis X. Murphy
 Jonathan Nathan
 National Broadcasting Company
 Mr. and Mrs. Jerry Lee Nelson
 Nemet Motors
 The New Kalman Sunshine Fund, Inc.
 Hugh Nickola
 Katherine L. Marshall and David Nissenbaum
 Charles Nolan#
 Mr. and Mrs. Wilson Nolen
 Northern Lights Foundation
 Priscilla Natkins and Seth Novatt
 Novogratz Family Foundation
 Joyce and John O'Brien
 Mr. and Mrs. Ian Ogilvie
 Mary Elizabeth McGarry and Stanley J. Okula, Jr.
 Mr. and Mrs. Augustus K. Oliver and Family
 The William & Miriam Olsten Foundation, Inc.
 Mr. and Mrs. George D. O'Neill
 Michael & Sally Orr
 Charitable Gift Fund
 P.I.E. Facilities of NY, Inc. P.S. 87#
 Mr. and Mrs. Robert P. Palatnick
 Zoe Pappenheimer
 Christin Passaro#
 The Pearson-Rappaport Foundation
 Mr. and Mrs. Jon R. Peisinger
 Mr. and Mrs. Thomas Peters
 The Frank and Janina Petschek Foundation, Inc.
 Leslie Pfrang
 Robert J. Pierot, Jr.
 Mr. and Mrs. Andrew C. Pipa
 Mr. and Mrs. Nicholas Platt
 Ponce De Leon Federal Bank

Cherie M. Henderson and David M. Poppe
 Lindalou and Richard V. Porcelli
 Sidney L. Posel
 Sarah L. Shore and Walter H. Prah
 The Louis and Harold Price Foundation, Inc.
 Charles O. Prince III
 Prometheus Fund
 Robert & Ilse Prosnitz Foundation
 The Prudential Foundation*
 Philip J. Purcell
 Richard I. Purnell Fund
 Mary Ann Goodman & Bruno A. Quinson Foundation

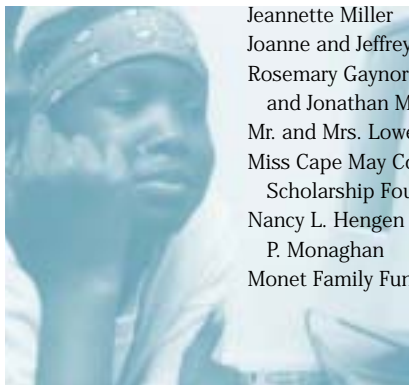


Chet Ranawat
 Sam Rappaport
 Mr. and Mrs. Charles Raymond
 Beth Grossman and Richard Reinhold
 Mr. and Mrs. Victor Remer
 Denise Rempé
 David S. Rich
 Mr. and Mrs. Scott D. Richter
 Mr. and Mrs. Luis E. Rinaldini
 Lucretia and Robert Risoleo
 Susan J. Robbins-Rothberg
 Mr. and Mrs. Howard E. Roosa, Jr.
 Susan J. Malfa and Jonathan Rose
 Lisa Rosenblum
 Rose Mary Purrzellera and Marc Rosenblum
 Cara Stein and Barry Rosenfeld
 The Juliet Rosenthal Foundation, Inc.
 The Harry & Andrew H. Rosenthal Foundation, Inc.

Natalie Rotella
 Leah Rozen
 Marjorie and Hans Rutimann
 Mr. and Mrs. Robert Rylee
 Berelle K. Samuel
 Joshua Samuelson
 Mr. and Mrs. Franklin R. Saul
 Mr. and Mrs. Scott Schafler
 The Schiff Foundation



L. Jordan Tamagni and Michael E. Schlein
 Dr. Mervin Livingston Schloss Fund
 The Schulweis Family Foundation
 Mr. and Mrs. David R. Schwarz
 Ruth and Harold Schwarz
 Robert K. Scripps Family Foundation
 The Seaberg Foundation
 Seacoast Foundation
 Herbert J. Seligmann Charitable Trust
 Robert E. Sell
 Peter J. Sellon 1997 Charitable Lead Trust
 Laura Sells-Doyle
 Kashmira Shah
 David J. Shapiro
 Mr. and Mrs. Jeffrey E. Shapiro
 Mr. and Mrs. John S. Shemilt
 Dorothy F. and William B. Shore Fund
 David M. Shribman
 Glen John Sickorez
 Diana M. Sattelberger and James S. Sligar
 Arthur F. and Georgianna P. Smith
 Cristina Enriquez-Bocobo and Cody J. Smith
 Harold Snyder
 Mr. and Mrs. Michael Sobotka
 Jennie M. Sorese
 Noah D. Sorkin



Barbara Anne Sousa
The Sports Authority
Susan Springer
Mr. and Mrs. Ian Steinberg
Polly Z. Steinway
Mr. and Mrs. James Stern
Jean and Robert Stern
Raymond C. Stewart
Richard B. Stothers
Anne L. Strassner
Mr. and Mrs. Robert Stuchiner
Charlotte and John S. Suhler
Mr. and Mrs. Stewart Sullivan
Solon E. Summerfield Foundation, Inc.
Susan J. Pels and Joseph Earl Sweigart
Margaret and Michael Swier
Mr. and Mrs. Ronald J. Sylvestri
Mr. and Mrs. Frank Tabert
Dr. Cindy A. Tanenbaum
John H. Taylor
Barbara Terasaka
The Ellen M. Violet & Mary P.R. Thomas Foundation, Inc.
Mr. and Mrs. William Thomas
Melissa and Todd Thomson
Mr. and Mrs. Jacques Thys
Tilia Foundation
Pota B. Torchio
Alvin S. Trenk
Trinity Homecare, LLC
Mr. and Mrs. Dana C. Troxell, Jr.
Theodore T. Tsao
April Uchitel#
Unilever United States Foundation, Inc.*
The University Club
Helen Vaughan
Viaggio Incorporated
Mr. and Mrs. Kevin Watson
We Care#
Richard C. Weber
Mrs. Herbert Wechsler
Mr. and Mrs. Erwin Weisberg
Mr. and Mrs. Ira Tensard Wender
Lucille Werlinich
Honi Werner
Whisconier Middle School (CT)
Gerard C. Widdicombe
Michele and Sri Priyali Wijegoonaratna

Judith M. Wilkinson
Lois T. Williams
Elizabeth Winthrop
Fred Wistow
Bonnie Woit
The Wong Family Fund
Rebecca P. Xenakis
Harry L. You
Mr. and Mrs. Edgar A. Zaloom
The Zankel Fund
Lenore Zerman
Jeffrey Zuckerman
Mr. and Mrs. Mark Lloyd Zusy
Anonymous (4)
Advocates (\$500+)
Mr. and Mrs. Jason Ackerman
Mr. and Mrs. Kenneth J. Ackerman
Lucille E. Ackerman
Sandra L. Ahman
Albany College of Pharmacy#
Marv Albert
Iris Alex
Linda G. Allen
Allstate Insurance Company
Altria Group, Inc.*
American General Corporation*
Grace Aldrich Andersen
Donald E. Anderson
Aon Re Inc.
Mr. and Mrs. Ralph R. Arditi
Mr. and Mrs. Alex H. Ardrey, Jr.
Robert T. Atchley
Atlantic Asset Management, LLC
Atlantic Express
Dr. and Mrs. Peter A. M. Auld
The Robert & Ellen Bach Foundation, Inc.
Arlene O'Hare Baier
Sheila Baird
Law Offices of Baker and Miller, P. C.#
Bank of America*
Mr. and Mrs. Kevin G. Bannon
Matthew J. Barnes#
Saretta Barnet
Betsy Barros
Mr. and Mrs. Roger H. Barrows

Judith L. Baum
Mr. and Mrs. Dandi Beckhard
Beecher High School (IL)#
Robert E. Beers
The Frances & Benjamin Benenson Foundation Inc.
Perrin R. Berkey
Leonard M. Berkowitz
Richard Berkowitz
Stephen K. Bierman
Kenneth Lee Blakeney
Barbara Blank
Lloyd and Laura Blankfein Foundation
Roberta and Willard Block
Mr. and Mrs. David C. Bloom
Mr. and Mrs. Robert Bloom
BMW of Manhattan, Inc.
BMW of North America, LLC
Jill Bobigan
Hayley Renee Boesky
Harry Bolger
Robert R. Bose
Arline T. Geronimus and John Bound
Mr. and Mrs. Bartley J. Breinin
Debra E. Bromberg
Brookfield Financial Properties, Inc.
Carolyn R. Brown
Phoebe and Charles Brown
Marian and George Edwin Brown, Jr.
Joann Brown
Marc Broxmeyer
Carol O. Brunner
Mildred Brussel-Smith
Tom and Harriett Burnett Family Foundation
Mr. and Mrs. Geoffrey H. Bye
Patton Campbell
Loretta Cangialosi
Juliann F. Cannilla
Capital Land Services, Ltd.
Mr. and Mrs. Raymond M. Carlson
Mr. and Mrs. Robert B. Cartwright
Alfred Celentano
Peter A. Cervi
J. Donte Chappell
Chelsea Technologies
Mr. and Mrs. Peter Cheston
Chubb & Son Inc.*
Virginia and James Cleaver
Ethan Coen

Odessa L. Cole
Faith Colish
M. Patricia Casey and Dennis Connolly
Colin J. Corgan
Margery Cooper and Neil M. Corwin
Judith Coulter
Mrs. Arthur M. Crocker
Mr. and Mrs. Patrick F. Crossman
Margaret A. Sarkela and John W. Curtis
Gloria M. Dabiri
Jeffrey B. Dailey
Mr. and Mrs. David Dangoor
Kristen and Jeffrey Daniel
James B. Daniels
Mr. and Mrs. Gary Dawyot
Day, Berry & Howard LLP
Mr. and Mrs. Miguel Carpio Delfino
Zelia C. De Paula
Maurice De Picciotto
Mr. and Mrs. Daniel Dees
Dr. Henri Robert Delbeau
Mr. and Mrs. William F. DeSeta
Donna and Richard Dieterle
David R. Dietrich
Wendie Winslow and Maximilian Dietshe
The Shaare Dina Charitable Trust
Dr. Rosina B. and Richard W. Dixon
William Dodds
Matt Donovan
Dorna U.S.A, LLC
Pat Doudna
Mr. and Mrs. Mark C. Droumbakis
The Druskin Family Foundation Inc.
E.S.P. Family Foundation, Inc.
Ezra Benjamin Edelman



EnergyWatch Inc.
 Alan S. Englander
 Gage and Richard Englund
 Phyllis J. Enright
 Frederick A. Eustis II
 The William Ewing
 Foundation
 Stacey Fabrikant
 Mr. and Mrs. Danforth P. Fales
 Mr. and Mrs. Paul L. Farber
 David Fazio
 W. Michael Fecko
 Jeanne and Stephen Feiman
 The Fein Foundation
 Georgette B. Felix
 Ethel Rubinstein and Elias
 Feuer
 Edward Z. Finfer
 Mr. and Mrs. Raymond A.
 Firestone
 Leslie and Jeffrey Fischer
 Barry Fishelberg Co., Inc.
 Mark B. Fisher
 Mr. and Mrs. Francis A.
 Fitzgerald
 Laura Quigg and Bjorn
 Flesaker
 Foundation Fund Free Sons
 of Israel
 Fran - Man Foundation
 Mr. and Mrs. Jeffrey A. Frank
 Frankel Family Foundation
 Linda and Roger Franklin
 Angela and Michael Frasco
 Gamma Energy and Trading
 Corporation
 Charlotte & Joseph Gardner
 Foundation, Inc.
 Mr. and Mrs. Bernard R.
 Gelbaum
 Julie E. and Alan J. Gerstein
 Mr. and Mrs. Roger Gilbert, Jr.
 Girl Scout Troop 1005 (NY)#
 Lucille Gladstone
 Martha I. Glantz
 Eileen Agard Glickstein and
 Jonathan Glickstein
 Global Commitment
 Foundation#
 Victoria K. and Justin
 Gmelich
 Darci B. Goldenberg
 Mr. and Mrs. Jacob Goldfein
 The Goldman Sachs
 Group, Inc.
 Jill C. Lesser and William M.
 Goldman
 The Mack Goldner Memorial
 Foundation

Mr. and Mrs. Harold Gootrad
 Helen O'Connor and Joe
 Gordon
 Ernest and Herta Gottschalk
 Philanthropic Fund
 Fred Gradin
 Mr. and Mrs. Robert F. Gray
 Green Bus Lines
 Mr. and Mrs. J. Markham
 Green
 Glenn M. Greene
 Ricardo Greer
 Lois M. Perelson-Gross and
 Stewart K. Gross
 Joyce and Glenn Grossman
 Joseph P. Guasconi
 The Geoffrey Gund
 Foundation
 Ellen Klein and Michael
 Gunther
 Barbara Peterson Hackett
 L. Hunter Hallowell
 Kathleen Tunnell and Gary
 Edward Handel
 Harlem RBI
 Mr. and Mrs. Paul Harman
 Janet and Jon Harrington
 Jack Byron Hartog
 Kathryn P. Hearst
 Hebrew Tabernacle
 Congregation#
 Mr. and Mrs. Stanley D.
 Heckman
 Anne Helm
 The Victor Herbert
 Foundation, Inc.
 Ann and John A. Herrmann
 Amy Slater Herzig
 Patricia Hirsch
 The Holborn Foundation
 Fay Holloschutz
 Robin G. and Sharon M.
 Holloway Charitable Trust
 Philip Holzer and
 Associates, LLC
 Craig Howard
 Kimberly J. and Paul J.
 Huchro
 Karen L. Hughes#
 Mr. and Mrs. George D.
 Hutchinson
 Carol and Erik Ipsen
 Lolita K. Jackson
 Rosetta James
 Ta-Tanisha D. James
 The Robert W. Johnson IV
 Charitable Trust
 Leah Johnson
 Nicole Johnson

Walter Jones, Jr.
 Alison M. Kaplan
 Marilyn and Dean Kaplan
 Jean and Robert Katzenberg
 Elizabeth S. and Thomas V.
 A. Kelsey
 Joan L. Kent
 Ellen Kern
 Takako Iyoku and Philippe
 Kim Khuong-Huu
 Bonni and Mark Kingsley
 Knowledgeworks Foundation
 Manny Korman
 Paul Krake
 Gary A. Kreinik
 Tamar Lewin and Robert
 Krulwich Fund
 Mr. and Mrs. Mark E.
 Kuhlmann
 Hiroki M. Kurita
 Courtney P. Brown and Paul
 Laforteza
 Audrey J. Lake
 Esther A. Malamud and Eric
 R. Landau
 Carmen E. Lantigua
 Las Campanas Community
 Gift Fund
 Nancy J. Lasersohn
 Laura E. Layton

Lydia and Alan Lee
 Amy Leeds
 David S. Lefkowitz
 Burt Lerner
 Mr. and Mrs. Sylvain Marc
 Leroy
 David S. Lester
 Pamela Sweeney and Peter
 Levenson
 Fredi Schiff Levin
 Mary Ellen Zincke and
 William J. Levis
 Jerrold Levy
 Cornett L. Lewers
 Melvyn and Janet Lewinter
 Charitable Fund
 Richard A. Lewis
 Liga Cultural & Deportiva
 Los Diamantes
 Richard Charles Lightburn
 Martha Berman and Robert
 Lipp
 Mr. and Mrs. James Loeks
 Stella Guarnieri and James
 Lombardi
 Mr. and Mrs. Joel L. London
 William K. Ludolph
 Kathleen M. Lynn
 Jane Lytle
 Frank T. Macinnis



Margaret S. Maclay
 Sharon D. Madison
 Cristina and Alberto
 Malinverno
 Christopher Mancini
 Mr. and Mrs. Richard H.
 Mangum
 Peter Marchetto
 Ann Marcus
 Antoinette and Vincent
 Marich
 Maureen M. O'Connor and
 Dennis J. Martin
 Susan and Edward Martin
 The Mary Louis Academy
 Matthews Foundation
 Hillary Mayers
 Mr. and Mrs. Joseph
 Mazzella
 Anne F. and Stephen J.
 McGuinness
 Wayne S. McKenzie
 McKinsey & Company, Inc.*
 Adelaide P. McManus
 Miriam F. Meehan Charitable
 Trusts
 Stacy and Christopher
 Meekins
 Matthew V. Merola
 Merrill Lynch
 Marianne Meyer
 Scott T. Michels
 Diane Miller
 Zita C. Millett
 Minolta Business
 Solutions, Inc.
 Julie and Edward J. Minskoff
 Deborah S. Mintz
 Marilyn Mizrahi
 Mr. and Mrs. Ross F.
 Mongiardo
 Sharon O. and G. Edward
 Montero
 Evangeline and Brian R.
 Mooney
 Barbara W. Moore
 Eva T. Moran
 David Morgan
 John Morrison
 Mr. and Mrs. Robert R.
 Morse
 C. Warren and Dolores
 Moses
 Mt. Pleasant - Blythedale
 U.F.S.D.#
 Saul Muchnick
 Mr. and Mrs. Michael Nash
 Belle and Murray Nathan
 Philanthropic Fund

The Daniel M. Neidich and
 Brooke G. Neidich
 Foundation
 The Neiman Marcus Group*
 Shirley V. Nelkin
 Seth A. Nemeroff
 New York State Park PBA

Rosa M. Pergola
 Mr. and Mrs. Stephen
 Perlbiner
 Caryn Block and David
 Pfeifer
 Dan Piccoli
 Mr. and Mrs. Robert Pittman



Nancy Newcomb
 Michael A. Newhouse
 NFL Charities
 Mr. and Mrs. Frank
 Nicholson
 Isabelle R. and Harold
 Oaklander
 Judith Frankfurt and James
 R. Oestreich
 Maureen A. O'Gorman
 Adrienne and George Orlan
 Mr. and Mrs. Charles P.
 Osborn
 Jacquelyn E. Stanley and
 Kudret Oztap
 P.S. 219 The Kennedy-King
 Elementary School#
 Employees of P/Kaufmann
 Vincent Pagano, Jr.
 Nicole and Bruce Paisner
 Teresa K. McRoberts and
 Stephen L. Palfrey
 Mr. and Mrs. Alfred G.
 Parmelee
 Nancy L. Pasley
 Tara Friedman and Jarrod M.
 Patten
 Paul Stuart, Inc.
 Mr. and Mrs. Brook S. Payner
 Andrew Pekala
 Avigdor J. Pempfer
 Penguin Putnam Inc.*
 Mr. and Mrs. Edward A.
 Perell

Linda and Steven Plotnicki
 Ann C. Poll
 Stacy E. and Douglas M.
 Polley
 Marcello Porcelli
 Mrs. Philip Potter
 Mr. and Mrs. Sol Pottish
 PPI
 Donna and Richard
 Pressman
 Mr. and Mrs. Richard G.
 Primoff
 Mr. and Mrs. Demetrios
 Prountzos
 Jane and Terry Quinn
 Joyce Miller Raisig
 Reginald Rasch
 Travis Reid
 The Mildred & Rudy Reis
 Foundation
 Respiratory Science
 Industries, Ltd.
 Laura Bernstein and Bruce
 Reznick
 Paul and Joyce Rheingold
 Family Foundation
 Helene and Fred Rieger
 Laura Bernstein and Bruce
 Reznick
 RMF Foundation
 Leslie M. Roach
 Jane Rosenberg
 Mr. and Mrs. Daniel
 Rosenbloom

Lois Ellison and Edward
 Ned Rothenberg
 Ruth and Stanley
 Rubenstein
 Christopher King Rugger
 Mr. and Mrs. Lawrence J.
 Ruisi
 Caroline and Kenneth
 Russell
 Christine Weart and Robert
 A. Sachs
 Mr. and Mrs. Richard
 Saidenberg
 The Barbara Saltzman
 Charitable Foundation
 Sandpiper Fund, Inc.
 Edgar W. Sands
 Mr. and Mrs. Joseph
 E. Saul
 Scott A. Saunders
 Whitney R. Savignano
 Franklyn Schaefer
 Renate Schaefer
 Danni R. Schifter
 John Schineller
 Ian Schragger
 James L. Schuetz Fund for
 Survivors of Victims of the
 World#
 Ralph Schwartz Foundation
 Frances Scott
 Mary C. Sculthorpe
 David L. Seidenberg
 Mr. and Mrs. Joel Seligman
 Rima Grad and Neil L.
 Selinger
 Karen and Walter Sewell
 Mr. and Mrs. Steven R.
 Sheck
 Andra Georges and Timothy
 C. Shepard
 David G. Sidebottom
 Paula Sidewater
 Elaine Siegel
 Susan and Michael Siegel
 Patricia Rind and Michael
 Siegel
 Josselyn G. Simpson
 Lisa and Alan Sinsheimer
 Mr. and Mrs. Barrett Slavin
 Mr. and Mrs. David L. Smith
 Rachel L. Bluth and Derek S.
 Smith
 Pamela B. Smyth
 Amy V. Snyder
 Jonathan Sobel & Marcia
 Dunn Foundation
 SoundHound Inc.
 Katherine Sprunt

Sheila Diane Stainback
 Star Welfare Foundation, Inc.
 Howard E. Stark
 Sonya Starr
 Pamela Frankel-Stein and
 Jonathan A. Stein
 Jane E. Steinberg
 Sheila and George E.
 Stephenson
 Carol H. Stix
 Mr. and Mrs. Curt Strand
 Geetha and Bala
 Subramanyam
 Mr. and Mrs. Paul M.
 Sunkes
 Elissa and Costantino
 Suriano
 Mr. and Mrs. Craig Sweeney
 Mr. and Mrs. Xavier E.
 Szejnberg
 Leah and Christopher
 Tahbaz
 Andrew Tax
 Carleton L. Taylor
 Edith W. Cooper and Robert
 L. Taylor
 The Telesco Family
 Foundation
 Mr. and Mrs. Jeremy H.
 Temkin
 Heidi Laurel Thompson
 Sister Marie E. Thornton
 Time Inc.
 Marjorie H. Tobias

Mr. and Mrs. James N. Tryforos
 Irene Tse
 Jane Turley
 Mr. and Mrs. Richardson V.
 Turner
 Gail and Richard Ullman
 United Way of King County
 (CA)*
 The Urban Dove, Inc.
 Mr. and Mrs. T. E. Van Note
 Robert van Schoonenberg
 Mary Vanburen
 Jeffrey J. Vandenberg
 Mr. and Mrs. Kenneth S.
 Vastola
 Andrea and Paul Vizcarrondo
 The VLG Foundation
 Michael J. Volkovitsch
 Susan E. McLaughlin and
 Eric C. VonCoelln
 Dorothea D. Waldron
 Delia M. Marshall and
 Thomas J. Wallace
 Andrew Wallach
 Marilyn and Ronald Walter
 Joan M. Warburg
 Sharon L. Wardlaw
 Marcy and Christopher
 Waterman
 Raymond V. Wedderburn
 Marianne Weinzinger
 Elaine G. Weisburg
 Marguerite Lawless and
 Paul Weiss

Dana Williams
 Francis H. Williams
 William J. Williams
 Mr. and Mrs. Mark A. Willis
 Willkie Farr & Gallagher
 Mr. and Mrs. Joshua Wind
 Nathaniel T. Winthrop
 Richard J. Wiseley
 Alice E. Wolff
 Mr. and Mrs. Leigh
 Wolfsthal
 Sharon H. Fong and James
 H. Wistman
 James Worth
 Mr. and Mrs. Harvey Wortzel
 Mr. and Mrs. D. Malcolm
 Wright
 Karen L. Yelick
 Antonia S. New and
 Benjamin C. Zipursky
 Anonymous (5)

Friend (\$250+)

A Little Star#
 Hans Aarsleff
 Carmen Abreu
 Martha C. Adams
 Sara Adler
 Jose Alfaro
 Cheryl Ann Allen
 Mary Lou Allen
 Mr. and Mrs. Herbert M.
 Allison, Jr.
 Thomas J. Allsopp
 Dorothy Altman
 Ameico, Inc.
 American Express
 Employees
 American International
 Group, Inc.*
 Marcie A. Goldstein and
 Bijan Amini
 Mr. and Mrs. K. Tucker
 Andersen
 Dorothy N. Annand
 William W. Appleton
 Aria Foundation
 Mr. and Mrs. Joel H. Arkin
 E. Nelson Asiel
 Association Foundation, Inc.
 Jeninne Attanese
 AXA Foundation*
 Tara S. Austin
 Roberta Babitz
 Elizabeth B. Bacon
 Martha F. Coultrap and
 Harvey M. Bagg, Jr.
 Jacqueline Bailey
 Randall Baker

Rajiv Baphna
 Mr. and Mrs. Thomas A.
 Barket, Jr.
 Leslie A. Barnett
 Mr. and Mrs. Michael H. Barr
 Susan Waltman and
 Thomas Barry
 Frank Battista
 Susan A. Bechdol
 Vivian T. Beckford
 William Beckmann
 Gary A. Beech
 Shelly and Drummond Bell
 Michael S. Bender
 Mr. and Mrs. Lawrence A.
 Benenson
 Dr. Jeffrey Lewis Benjamin
 Joan O. and Samuel N.
 Benjamin
 S. C. Benjamin Foundation
 Patricia Fahy and B. Wayne
 Bequette



Barbara Berger
 Adam D. Berkowitz
 Anne Berkowitz
 Freddy Bienstock
 Margaret Mintz and John S.
 Birdsall
 Jennifer Dunkl and David
 Birnbaum
 Elizabeth D. Black
 Gregory Blackman
 Mr. and Mrs. Mark W.
 Blackman
 Mr. and Mrs. Patrick
 B. Blake
 Winifred and Joseph H.
 Blatchford
 Mr. and Mrs. Syd Blatt
 Paula and Adam Block
 John M. Blume
 Tillie & William Blumstein
 Family Foundation
 William Winthrop Blunt
 Mr. and Mrs. George Bollag
 Mr. and Mrs. Girome S.
 Bono
 Daniel C. Braden
 Helen A. Brandes



Michele Tognozzi
 Donna J. Leduc and Peter K.
 Tomozawa
 Beverly Colon Torres
 Jill Totenberg
 Transflock LLC
 Trenwick Group Ltd.

Patricia A. and George W.
 Welde
 Benjamin P. Welsh
 Mr. and Mrs. Halton West
 WFP Retail Co. L. P.
 Caroline and Walter
 Whetstone

Alyson Fendel-Breier and
Richard Breier
Sharon Brennan#
Zoë Brennan-Krohn#
Marilyn Brien
Louis J. Brigandi
Mr. and Mrs. Robert
Brinkman
Brooklyn Adult Learning
Center#
Daria A.K. Brown
Jason Brown
Michelle Arnot and
Roger C. Brown
Victoria C. Brush
Mr. and Mrs. John F. Bryan
Mr. and Mrs. Richard A.
Buccarelli
Michelle Buckley
The Buffalo News (NE)
Van T. Ly-Bunyan and
Bert A. Bunyan
Nicholas R. Burke
Arnold I. Burns
Mr. and Mrs. William E.
Byers
C/K Food Service
Corporation, Inc.
Bruce and Cannon
Quigley Campbell
Mr. and Mrs. Robert
Campbell
Wendy N. Carduner
Tamara L. Carr

Anna U. Cisar
Mr. and Mrs. Robert K.
Citrone
Clark Mackain LLC
Mae K. Clarke
Candice B. and Pablo
Clauzell
Cleaning Systems Company
Gary Clevidence
Robin E. Cofer
Kendall Coffey
Maureen Cogan
Paul M. Cohen
Renee F. Cohen
David Cohn
Marya Cohn
Laura A. and James M.
Colassano
Molly Magid Hoagland and
Rufus A. Collins
John J. Collum
Mr. and Mrs. Glenn A. Conca
Larry E. Condon
Joan Considine
Mary M. Conway
Helen M. Cooper
Mr. and Mrs. Philip A.
Cooper
Cord Meyer Development
LLC
John P. Correr
Shawn D. Costello
Ruth L. Cove
Wilbur A. Cowett

Mr. and Mrs. Ezra Dabah
Timothy Dalton
Mrs. William J. Daly
Susan and Greg A. Danilow
Geoffrey M. Danisher
Kerry G. David
James S. Davidson
Jeanne Davidson
Barbara Defina
Roy C. DeLamotte
J. M. Desimone
Ralph Destino
Madeleine D'Eufemia
Diana Di Mare
Joseph Diamante
Cecelia Dietrich
Phyllis Diamond and Peter
Dignazio
Hanni Dinkeloo
The Honorable and Mrs.
David N. Dinkins
Jacqueline Distelman
Mr. and Mrs. Ronald
Doerfler
Mr. and Mrs. Adrian E.
Dollard
Sandra A. Smith and Keith
A. Doney
Strachan & Vivian Donnelley
Foundation
Vincent M. Doogan
Kim Dorsey
Patrick J. Doyle
Dr. and Mrs. Richard
Dranitzke
Alan M. Dubow
Michele Dubowy
Mr. and Mrs. John A.
Duddy III
Dr. Gunter Dunkel
Damien Dwin
Raimonds A. Dzelme
Tara Eirich
David Elbaum
Karen and Jay Eliezer
Mr. and Mrs. A. M. Ellien
Mr. and Mrs. John T. Elser
Ellen Florence Emery
Mr. and Mrs. Alan M.
Epstein
Neel Epstein
Sylvia M. Erhart
Russ A. Ethington
Mr. and Mrs. Richard M.
Fabbro
Lourdes Falco
Mr. and Mrs. Charles Falcon
Holly O'Grady and Steven
Fechter

Dr. Michael Feiler
Jerald D. Fessenden
Tessa Grundon and
Jean-Luc Fievet



Flatbush-Tompkins
Congregational Church
Dr. and Mrs. Alan R.
Fleischman
Laura K. Fleming
Janet Flory
Clarence M. Floyd
Herbert M. Fontecilla
Valerie L. Forbes
Katherine C. Foster
Alison Fox
Brian L. Frank
Mr. and Mrs. Mitchell B.
Freinberg
Mr. and Mrs. Edgar
Freitag
Wendy Stein and Bart
Friedman
Lucy N. Friedman
Kevin Friend
Troy Fulton
Robyn B. Furman
Sarang Gadkari
Margaret Gadon
Philip Galgano
Robert Galli
Martha J. Gallo
Shannon Powell and
Michael L. Gargiulo
Tara Geibel
Mr. and Mrs. Brit Geiger
Mary Ellen and Andrea
Geisser
Jessica M. Gibson
Deborah A. Gieringer
Julie Gieske
Kathryn Gill
Meredith Adler and
Nigel A. Gillah
Dennis Gin
Madeline Shobry's Glisten
Memorial Fund
Adrian Gmur



Ruth P. Cashman
Mr. and Mrs. Philip
Cavanaugh
Michal Chafers
Mr. and Mrs. James Chanos
Marilyn Chelstrom
Elly Christophersen

Mr. and Mrs. John F. Cozzi
Joanna Yuan Crespo
Anne Cronin
Eleanor Agnello
Cunningham
Mr. and Mrs. Joseph V.
Curcio

Mr. and Mrs. William J. Goebelbecker
 Mr. and Mrs. Michael A. Goldman
 Allison Gollust
 Laura A. Wolff and Clayton W. Gordon
 Maura Gorman
 The Fire Departments and Citizens of Goslar, Germany#
 Patricia D. Gray
 John C. Greco
 The David J. Greene Foundation, Inc.
 Sally Greenspan
 Kristen C. Griesemer
 Antwaun D. Griffin
 Donna C. Gargano and James M. Grippi
 Mr. and Mrs. Frank Grobman
 Heidi Guldbransen
 Mary Ann Hansen and Stuart Haber
 Mr. and Mrs. Andre Haddad
 Thomas L. Hajdukiewicz
 Bonnie Hall
 R. May Lee and John P. Hall III
 Ann Hamm
 Jane L. Hamrick
 Gina Harman
 Janet C. Harrington
 Elizabeth E. Harris
 Mr. and Mrs. S. David Harrison
 Barry Hayes
 Lynn M. and Thomas J. Hayes
 Jane Hecht
 Mr. and Mrs. Morrison H. Heckscher
 Deborah Steinborn and Uwe Heuser
 Scott Hender
 Karen Hendrickson
 Jane P. Herman
 Michael S. Herman
 John S. Herold
 Gail Healy Hilson
 Kathryn S. Hirsch
 Phillip Ho
 Trevor Holland
 Helen Honig
 Dr. and Mrs. Marshall S. Horwitz
 Mr. and Mrs. Stephen R. Howe, Jr.
 Hurewitz Creative Partners
 Paul Indig

Erin N. Inselberger
 Peter A. Irwin
 Janice Iversen
 Betty Anne Jackson
 Thomas J. Jackson
 Jacoby Electric Corporation

Jonathan Koplovitz
 Katharine Kosmak
 John & Evelyn Kossak Foundation, Inc.
 Dawn D. Bridges and Stephen A. Kost



Suzanne D. Jaffe
 Mr. and Mrs. Peter H. Jakes
 Joan Japha
 Jill Ann Jaroff
 Mr. and Mrs. Sean M. Jeffries
 Gundars Jegers
 Mimi Joe
 Vivian M. Brady-Jones and Brian M. Jones
 Mr. and Mrs. Daniel F. Joseph
 Debra J. Kalish
 The Kantor Family Foundation
 Peri Kantor
 Vijay M. Karnani
 Mr. and Mrs. Harry C. Katz
 Nels R. Kauppila
 Rose and Sid Kay
 H. Alan Keener
 Elena A. Kelley
 Lisa J. Kiell
 Harriet Kiltie
 Karen S. Lavine and Donald G. Kilpatrick
 Michael S. Kim
 Mr. and Mrs. David R. Klein
 Laura and Marc Klein
 Mr. and Mrs. Peter D. Klein
 Geraldine Klein-Robbenhaar
 Mr. and Mrs. William M. Knobler
 Shelley Stile and Scott C. Konner
 Anne Kopelson

M. Krall
 The Kramer Foundation
 Jan L. Krawitz
 Ann Kuhlmann
 Mr. and Mrs. Wolfgang Kunze
 Bradley C. La Londe
 Christopher C. Land
 Steven D. Lando
 Mr. and Mrs. Peter G. Lanino
 Deborah Lashley
 Mr. and Mrs. Geoffrey D. Lawrence
 Karen Tucker Le Frak
 Sylvia Leary-Blount
 Adam S. Lechner
 Mr. and Mrs. Wing Yim Lee
 Harry B. Leeds
 Brian M. Leeney
 F. Jacob Leicht and Benjamin Leicht
 Walter F. Leinhardt
 Mr. and Mrs. Jacques E. Lennon
 Robert Leo
 Alvin Eugene Leonard
 Mr. and Mrs. Richard P. Lerner
 Rebecca Levin
 Irene Levoy
 Mr. and Mrs. S. Jay Levy
 Margaret M. Lewis
 The Honorable Yvonne Lewis
 Priscilla Cunningham and Jay C. Lickdyke

Mr. and Mrs. David M. Lindley
 Mary D. Lindsay
 James A. Link
 Abraham C. Littenberg
 Daniel Litwin
 Louise E. Lombardi
 Judith Lonsdale
 Mee Seen Loong
 Dr. Robert Lopez
 Susan T. Rodriguez and Charles F. Lowrey
 Jennifer Lukin
 Ronnie Lutwak
 Joanne Lyman
 Mr. and Mrs. John A. Mac Kinnon
 Mr. and Mrs. Scot R. Mackie
 Wilson H. Madden, Jr.
 Michelle R. Madison
 Sharad D. Madison
 Gretchen B. Maher
 Shirley A. Mahoney
 Oswaldo Malave
 Robert Malfucci
 James S. Malin
 William F. Manekas
 Frances E. Manzi
 Dr. and Mrs. Joseph C. Marcus
 Markoff & Krasny#
 Jacqueline Marti
 Justin J. Martin
 Carol Fisler and Lawrence M. Martin
 Myrna Martinez
 Paul C. Mazzanobile
 Daniel G. Mazzola
 William C. McCahill
 William F. McCoy
 Kevin C. McDonald
 Carol Zerbe Hurford and Thomas W. McEnerney
 Jennifer E. Nadeau and Matthew McFarlane
 Mr. and Mrs. Andrew J. McKelvey
 Patricia H. McMahon
 Sharyn Meaney
 Cathleen Medwick
 Gertrud A. Mellon
 Mendelsohn Kary Bell & Natoli LLP
 Ellen Metzendorf
 Michael Miele
 Dr. and Mrs. William A. Miles
 Mr. and Mrs. Kenneth S. Miller
 Mr. and Mrs. Tedd W. Miller

Helen J. Mintz
 Mr. and Mrs. John Miranda
 Mr. and Mrs. Joseph C. Mitchell
 Benjamin Mittelman
 Kelly A. Klick and John J. Mohlmann#
 Justine C. Mojica
 Moody's Foundation*
 Anthony R. Moore
 Brian S. Moore
 Nelsha Moorji
 Michael A. Moran
 Mr. and Mrs. William A. Morgan
 Anita Morrissey
 Hila Arnon and Scott E. Mortman
 Ellen B. Moss
 Mr. and Mrs. Carl M. Mueller
 Mueser Rutledge Consulting Engineers
 The Murphy Family
 Francis W. Murray, III
 Neale and Barbara Musolff
 Mary Beth Kelly and Carl Henry Nacht
 Marlene E. Nadel

Laurie Brown-Nagin and Kenneth L. Nagin
 Elizabeth S. Natrella
 Ilse Naumann
 Richard J. Navarro
 Dr. Asha Nayak
 Stephen Nelson
 Martin D. Newman
 John O. Nicklis
 Peter Niewiadomski
 Nissen-Lie Communications, Inc.
 Nour Foundation, Inc.
 Mr. and Mrs. Sean O'Brien
 John E. Oelze
 Sylvan and Ann Oestreicher Foundation, Inc.
 Offshore Surf & Sport Ltd.
 Lance Ogiste
 Barry A. Olmezer
 Margaret Olson
 Mr. and Mrs. Lawrence H. O'Neill
 Onesource Facility Services Inc.
 Katharine L. Edmonds and Jan Opalach
 Cathy and John O'Rourke

Mary Alice O'Rourke
 Eileen and Patsy Orzo
 Bea and Nat Pappagallo
 Smita J. and Jayprakash V. Patel
 Paulsboro High School (NJ)#
 Pearson, Inc.*
 Margaret Peel
 Kate Walbert and Rafael Pelli
 Mr. and Mrs. Joseph R. Perella
 Jose L. Perez
 Luis R. Perez
 Lewis Perkiss
 Judy and Robert Perl
 Toni A. Perlberg
 William G. Pertusi
 Mr. and Mrs. Richard M. Phelan
 Mr. and Mrs. Michael H. Phillips#
 Caleb Pitters
 Brian Pitz
 Eddie Plutzer
 Katherine Lemire and Daniel J. Politzer
 Paul Polydorou
 Jacalyn Bitterman and Daniel Pomerantz
 Mr. and Mrs. Juan C. Porcelli
 Mr. and Mrs. David F. Poritzky
 Normajean Pratico
 Tamara D. Prendergast
 Celeste M. Prochaska
 PWB R. E. Agency Inc.
 Mr. and Mrs. Irving R. Raber
 Paula Radding
 Sloane Elman and Barry Radick
 Michele M. Fillion and Joshua E. Raff
 Mary C. Kemen and Brian C. Randall
 Joanna A. Randolph
 Ellen Rusconi and Cory S. Rau
 Larry Rawson
 Helene E. Redell
 Mr. and Mrs. Arthur Reis, Jr.
 Jodi C. Remer
 Ira M. Resnick
 Foundation, Inc.
 Mr. and Mrs. William Riley
 Jake Robards
 Julia S. Robbins
 Frederick R. Rohn

Carlo G. Romero
 Susan Romney
 Mr. and Mrs. Jeffrey Ropp#
 Susan F. Pinsky and Marc Rosen
 Lois Rosenberg
 Consultants, Inc.
 S. Michael Rosenberg
 Mr. and Mrs. Walter Rosenblum
 Mr. and Mrs. Jack Rosenthal
 Amy Bauman and Marc Rosenwasser
 Ellen C. Ross
 Steven Roth
 Suzanne B. Roth
 Judith Rothenberg
 Henry Rowley, Jr.
 David J. Rudnick
 Louis M. Ruffalo, Jr.
 Mr. and Mrs. Joseph Russo
 Ivan Samstein
 Albert Sarnoff
 Mr. and Mrs. Mitchell J. Sassower
 James Satloff
 Mr. and Mrs. Andrew Saul
 William D. Schaffel
 Stephanie Ann Schach
 Alisa and Elliot Scher
 Scheuer Associates
 Foundation Inc.
 Dr. and Mrs. Ralph Schiller
 Edwin Schlossberg
 Foundation
 Harvey Schussler
 Mr. and Mrs. Andrew Schwartz
 Dr. Norma B. Lerner and Dr. George J. Schwartz
 Phyllis and Howard Schwartz
 Mr. and Mrs. Salvatore Sclafani, M.D.
 Karen Scowcroft
 Daniel Selcow
 Mr. and Mrs. David Selove
 Mr. and Mrs. Joel G. Serebransky
 Michael Seton
 Keith A. Shaljian
 Leonard Shapiro
 Mr. and Mrs. Mark Shapiro
 Eugene P. Sheehy
 Margaret L. Sheils
 Mr. and Mrs. Robert W. Shepard





Mr. and Mrs. Frederick N. Sheppard
 H. Virgil Sherrill
 Mary N. Shimkin
 Heidi and Walter Siegel
 Lisa Siegman
 Cheryl Saban and Michael Jerome Siegmund
 Cinda P. Siler
 Silverberg/Max Fund
 Eric Silverman
 Patricia Silvers
 Mr. and Mrs. Frank Silverstein
 Mr. and Mrs. Scott W. Simmel
 Olga Simonovic
 Nancy G. Siraisi
 Martin J. Sklar
 Dana Ehrlich and Michael Sladek
 Michael Slavin
 Virginia Sloane
 Kathryn Smith
 Talma Nir and Ross L. Smotrich
 Zachary Snow
 Harvey Sobelman
 Yvonne and Mark Soltz
 Southern Marin Mothers Club (CA)#
 Sparta Financial Services LLC
 Donna E. Spensieri
 Yvonne F. Payne and Edward F. Spitzer
 Vincent F. Splain
 Dr. Judith Stamberg
 Michael Stanton
 Jonathan Stefanick
 Sophie Stefanick
 Robert J. Stern
 Marti Stevens
 Mr. and Mrs. Rufus C. Stillman
 Mr. and Mrs. Lawrence Stoller
 Geoffrey R. Stoner
 Joan and Henry Strauss
 Ursula Strauss
 Mr. and Mrs. John T. Sullivan
 Tamara A. Sutfin
 Jennifer Dalven and Gary M. Swidler
 Michael Tamasco
 Timothy Tattam
 Angela M. Tehan
 Mr. and Mrs. Allen Thomas, Jr.
 Dorothy B. Thornton

Stefani Toonkel
 Mary Ann Tosto
 Transport Workers Union of America
 Tribeca Associates TFMG, LLC
 Hale F. Trotter
 Bert Turelli
 Bobbie G. Rose and Thomas J. Ucciferri
 F. H. Unlandherm
 H. Stuart Valentine
 Mr. and Mrs. Donald P. Van Court
 Van Ness Films Inc./"Backstory"
 Edith Van Slyck
 Nadine Asin and Thomas van Straaten
 Laura W. Blanchet and Conrad Van Tienhaven
 Trinke Vaughan
 Mr. and Mrs. Thomas H. Vogel
 Grace Lyu Volckhausen
 Clara E. Wade
 Justin A. Wakefield
 Anna Waldherr
 Alexis Walker
 Sarah Adele Walker
 Mary A. and Kenneth R. Walters
 Patricia Wang
 Hilde Waring
 Charles G. Watson
 Mr. and Mrs. Charles L. Weinberg
 Joel & Barbara Schloss Weinberg Philanthropic Fund
 Mr. and Mrs. Kenneth M. Weinberg
 Nancy Roob and Lukas I. Weinstein
 Julie A. Applebaum and William D. Weisberg
 Mr. and Mrs. Ronald J. Weiss
 Dr. and Mrs. John H. Welch
 Eric Wentzel
 Wien Family Fund
 Mr. and Mrs. Mark B. Williams
 James A. Wilson, Jr.



Neil Waldman: Artist, Author, Illustrator

In 1999, Neil Waldman and his publisher, Boyds Mills Press, introduced the world to *The Starry Night*, a fantasy he wrote and illustrated for children that imagines the transformation of a young boy through his encounter with a magical Vincent Van Gogh, whom he guides around New York. A generous amount of the proceeds from that book have been, and still are, donated to The Children's Aid Society. Now, Neil and Boyds Mills are about to publish *Dream Makers*, a book of 42 poems by children selected and illustrated by Waldman, in honor of Children's Aid's 150th anniversary. The poems, which reflect the children's hopes, dreams and aspirations, include nine by children who attend CAS community schools. A portion of the proceeds of *Dream Makers* will also help support the Society's work.

Diantha Wilson
 Deborah M. Winshel
 Mr. and Mrs. D. Scott Wise
 Norman Wolf
 Mr. and Mrs. David Woll
 Andrea A. Wolper
 Mr. and Mrs. Willard L. Wood
 Mrs. Leonard Woods
 Mr. and Mrs. Peter I. Workman
 Holidae H. Hayes and Frederic Wyatt
 Justin R. Wyatt
 Dennison Young, Jr.
 Mr. and Mrs. Paul Zabaleta
 Helene Zarembor
 Gary Zenkel
 Mr. and Mrs. Sam M. Zuckerman
 Anonymous (4)



Bequests

This year, The Children's Aid Society received bequests and trust payments from the following deceased friends who remembered the city's children in their wills.

We acknowledge them with our profound gratitude.

- | | |
|---|-----------------------------------|
| Alexander Abraham | Martha Meyer |
| Jean Batsu | Marion Blacklock Miller |
| Robert L. Burr | Jean Lee Mills |
| Emily Howland Chauncey Trust Fund | Dorothy M. Niemann |
| Robert LeCron Clark | Zilph Hayes Palmer Trust |
| Joseph H. Cooper | Benjamin F. Powell |
| Alfred and Natalie S. Cornell | Howard C. Robbins Trust |
| Helen Cosden | Elizabeth Rumpf |
| Fairfax C. Garthwaite, in loving memory of her mother, Agnes Hugh Cravens | Dorothy A. Seiler |
| Paula Gutman | Saul Shapiro |
| Valerie B. Hayden | Arthur M. Simon |
| Lydia T. Hicks | Gloria Smythe |
| F.B. Hoffman Benevolent Trust | Clementine S. Smythe |
| Eileen Adair Hughes | Irma Huck Stephens |
| Adrian H. Jackson Charitable Trust | Phillip B. Thurston |
| Lillian Keller Kuhn Trust | Dorothy Waage |
| George J. Lambrose, in memory of Emma V. Lambrose | Clara A. Warsaw Irrevocable Trust |
| Joyce Lampert | Dorothy R. Watson |
| Janet Smethurst Leete Trust | Hester Ellen Williams |
| Martha Mainzer Trust | Leonard Wilton Winget |
| Jane L. Mali Charitable Lead Trust | Carmela Woodruff |
| Estelle A. Manning Residuary Trust | |



The Charles Loring Brace Society

The Charles Loring Brace Society honors friends who have made the deepest commitment to children by making them the beneficiaries of a gift to The Children's Aid Society through their wills or life income gifts.

Charles Loring Brace, for whom The Brace Society is named, was the founder and first president of The Children's Aid Society, and led the agency from 1853 until 1890.

Deferred gifts and bequests from the generous donors listed here will ensure continuation of our services to the neediest children in perpetuity.

Robert G. Adams
Leone Adelson
Katharine S. Almy
Sheila Baird
Mrs. Bernt Balchen
Cecelia Beirne
Joan O. and Samuel N.
Benjamin
Susanna and Jason Berger
Donna Bascom and Paul A.
Biddelman
Josephine Brienza
Helen Gurley Brown
Kenneth E. Bruce
Mildred Brussel-Smith
Antoinette P. Cantore
Florence V.G. Carney
Angela Christy
Philip Coltoff
Samuel M. Convisor
Frances Daution
Stephen J. De Luca
Shirley Eagle
Eva L. and Simon Ezri
Gertrude L. Feiss
Edward Z. Finfer
Desmond G. FitzGerald
Frank and Jeanette Flagiello
Mr. and Mrs. Robert N. Flint
Mildred and Gene Forrell
Myrrha O. Frankfurt
Gary J. Gabriel
Elizabeth H. Gaillard
Gloria Gallingane
Véronique Boyer de la Giroday
Rosetta B. Goodman

Pauline Gray
Patricia M. and Stanley E.
Grayson
Mr. and Mrs. Marshall M. Green
John S. Griswold
Maevae and Andrew Gyenes
Ellen F. Halter
Georgina M. Hecker
Alison Cragin Herzig
Nancy and Douglas Horsey
Trudy and Charles Insel
Mrs. C. Lincoln Jewett
Carolyn R. Johnson
Ezra Kaplan
Dorothy V. Karrel
Rose and Sid Kay
Mrs. George A. Kellner
Hilda Kent
Edgar and Eileen Koerner
Winifred Kovacik
Ann J. Kugel
Miriam V. Lally
Mr. and Mrs. Edward M.
Lamont
Norman Mills Leff
Lucy D. Lieberfeld
Mrs. Edgar A. Loebel
Edward C. Lord
Kathleen M. Lynn
Helen T. Matthews
Martha B. McLanahan
John Meagher
Celia Meilan
Gertrud A. Mellon
Gerald M. Monroe
Alma C. Moore

C. Warren and Dolores Moses
Anita Nelkin
Catharine White O'Rourke
Mr. and Mrs. Stowe C. Phelps
Jane and Terry Quinn
Aimee and David Rhum
Beverly Rice
Dorothy Stoner Rivkin
Mr. and Mrs. Charles J. Roussel
Mrs. Peter Rugg
Lita Scheel
Susan and Nicholas Scoppetta
Arthur F. and Georgianna P.
Smith
Roberta M. Smith
Mr. and Mrs. John W. Spurdle, Jr.
Barbara H. Stark
Jean and Robert Stern
Carleton L. Taylor
Paul Toomey
Felice H. Valen
Cynthia W. Van Husan
George Vargish
James H. Vaughn
Eloise M. Warner
Lucille Werlinich
Sarah White
Richard E. Winter, M.D.
Nancy Zachary
Anonymous (4)

In Memoriam
Dr. Thomas P. Almy
Klaus Loewkowitz
Hester Ellen Williams

Foundation and Corporate Donors



We wish to express our gratitude to the following foundations, corporations, trusts and associations that made major investments in our comprehensive services to children and families in need during the year ended June 30, 2003. Amounts shown reflect cash gifts only; gifts made as part of a multi-year pledge are marked as such. Smaller organizations are listed with the Guardian Members, beginning on page 24.

*Symbol key: *corporate matching gift program #multi-year pledge
@ indicates some portion of gift dedicated to WTC relief*

\$1,000,000+

The After-School Corporation
The Robin Hood Foundation
Zoom Foundation

\$500,000+

Altria Group, Inc.*
Freddie Mac Foundation@
Charles Stewart Mott Foundation#
The Starr Foundation#@

\$300,000+

The Carmel Hill Fund
Cleveland H. Dodge Foundation, Inc.
Charles Hayden Foundation#
Mulago Foundation#
The Picower Foundation
UBS Humanitarian Relief Fund@

\$200,000+

Citigroup Foundation#
Madison Avenue Fund for Children

\$100,000+

Accenture Ltd.
Altman Foundation
Atlantik-Bruecke e.V.@
Annie E. Casey Foundation#
Children's Miracle Network
The Clark Foundation#
The Horace W. Goldsmith Foundation#
The Harman Family Foundation#
William Randolph Hearst Foundation, Inc.
Here Is New York@
P/Kaufmann#*
Pearson Relief Fund@

The Simons Foundation#
The Bernice and Milton Stern Foundation
UBS Financial Services*

\$50,000+

Boys & Girls Clubs of America
The Louis Calder Foundation#
James and Judith K. Dimon Foundation
The Educational Foundation of America#
Empire State Development Corporation
Independence Community Foundation@
Intel Foundation
The Robert Wood Johnson Foundation#*
Leventhal Family Charitable Foundation, Inc.
Morgan Stanley
Ruth Mott Foundation
Nike, Inc.
The Pinkerton Foundation#
Relief International#@
Melvin R. Seiden Fund
Staten Island Bank & Trust Foundation#
Unitarian Universalist Service Committee@
United Way of New York City

\$25,000+

Louis & Anne Abrons Foundation, Inc.#
All Souls Church@
Bari Lipp Foundation
Blue Hill Troupe, Ltd.
Christopher J. Carrera Charitable Gift Fund
Computer Associates International, Inc.*@

Credit Suisse First Boston
Deutsche Bank*
Charles A. Frueauff Foundation
Bernard F. and Alva B. Gimbel Foundation, Inc.
Hagedorn Fund
The Heckscher Foundation for Children
The Charles Evan Hughes Memorial Foundation, Inc.
Walter C. Klein Foundation
New York State Alliance of Boys & Girls Clubs, Inc.
Parente Randolph, PC@
Salomon Smith Barney
Sarah I. Schieffelin Residuary Trust
The Rosalie K. Stahl Lead Community Trust
Toys "R" Us Children's Fund
van Ameringen Foundation, Inc.
Washington Square Fund

\$15,000+

The Lily Auchincloss Foundation, Inc.
The Sandra Atlas Bass and Edythe & Sol G. Atlas Fund, Inc.
The Berman Family Foundation
Louise and Arde Bulova Fund
Dancing Cat Productions, Inc.
Dorfman Abrams Music, LLC
Dynamic Delivery Corp.
EHA Foundation
The Ferriday Fund Charitable Trust
Leibowitz and Greenway Family Charitable Foundation
Henry & Lucy Moses Fund, Inc.
The New York Community Trust
The Overbrook Foundation
Redlich Horwitz Foundation

Sasco Foundation
The Schnurmacher Foundations
Siemens Corporation
The Sinha Foundation
United Hospital Fund of New York#
United Way Services (Cleveland)@

\$10,000+

ABC, Inc. Foundation
ATCO Properties & Management, Inc.
The Barker Welfare Foundation#
Bellmarc Brokerage, Ltd.
Bloomingdale's
Constance L. Breuer Charitable Lead Trust
Susan D. Camilli Foundation
Circuit City Stores, Inc.
Courtroom Television Network LLC
Debevoise & Plimpton
William H. Donner Foundation, Inc.
Jacob D. Fuchsberg Law Firm, LLP
Peter and Kristen Gerhard Foundation
Glenstone Foundation
Herrick Theatre Foundation Inc.
IBM Employee Charitable Contribution Campaign
JPMorgan Chase Bank*
MetLife Foundation
The New York Music for Youth Foundation
New York Jets
Origo-Levy Child Welfare Fund
Edward and Ellen Roche Relief Foundation
The Sirius Fund
SMBC Global Foundation, Inc.@

The Staten Island Children's Campaign
Jean L. and Robert A. Stern Foundation
The Sadie and George P. Wakefield Residuary Trust
The Walsh Street Foundation
Richard and Elizabeth Witten Charitable Fund
The Zurich Foundation, Inc.*
Anonymous

\$5,000+

AJP Foundation for Children, Inc.
The Associates Council of The Children's Aid Society
Association of Executive Search Consultants, Inc. @
Dr. Theodore Atlas Foundation
John E. & Caron G. Avery Foundation, Inc.
Babbitt Family Charitable Trust
The Theodore H. Barth Foundation
Bender-Fishbein Foundation, Inc.
Bloomberg L.P.
The Brand Foundation of New York
The Brownington Foundation
Mary Livingston Griggs & Mary Griggs Burke Foundation
Carnegie Corporation of New York *
Charina Foundation, Inc.
John V. Cioffi Foundation
Coca-Cola USA

Con Edison
Convissor-Milston Family Fund
Cushman & Wakefield Davidowitz & Associates, Inc.
Margaret V. Gilman De Luca & Stephen J. De Luca Fund
The Feinberg Family Foundation
Richard Fields/Marjorie Vandow Fund @
Fifth Avenue Presbyterian Church
Alexander Fischbein Foundation
Fleet Bank, N.A.
Freddie Mac Corporation
Gap Foundation
Humanitarian Arts Foundation Inc.
Imperial Bag & Paper Co., Inc.
The Jordan Company LLC
The Linden Foundation
The Gary Lippman Philanthropic Fund
Litterman Family Foundation
Joseph Littlejohn & Levy Inc.
Luminous Visions, Inc. @
The Lucille and Paul Maslin Foundation, Inc.
The MBIA Insurance Corporation*
The Michel Foundation
Margaret T. Morris Foundation
Natural Selection Foods @
Todd Joseph Ouida Children's Foundation @
Edith M. Schweckendieck Charitable Trusts
Select Equity Group Inc.

John A. Sellon Charitable Residual Trust
The Six Talents Foundation Inc.
Abraham and Beverly Sommer Foundation
Seth Sprague Educational & Charitable Foundation
United Way of Tri-State, Inc. @
The Waterman Family Fund
The Wellspring Foundation
Willowbridge Associates
Barbara and David Zalaznick Foundation

\$2,500+

Air Craft Mechanical Inc.
Allied Irish Bank
AMBAC Assurance Group, Inc. *
American Express Foundation *
Aon Consulting
The Bank of Tokyo-Mitsubishi, Ltd.
Belson Family Fund
Ashish and Leslie Bhutani Charitable Gift Fund
The Big Wood Foundation
John N. Blackman, Sr. Foundation
Boyd's Mills Press
Chicago Remembers Fund @
Colgate-Palmolive Company
Document Express, Inc.
The Education People, Inc. @
Enterprise Rent-A-Car Foundation
Irwin and Arlene Ettinger Philanthropic Fund
Fan Fox and Leslie R.

Samuels Foundation
The Gage Fund Inc.
Gibbons, Del Deo, Dolan, Griffinger & Vecchione
The Malcolm Gibbs Foundation, Inc.
William Edwin Hall Foundation
The Rau Foundation
Hettinger Foundation
IBM Corporate Community Relations
The Merck Company Foundation*
Monterey Fund Inc.
MTA New York City Transit Employee Charity Drive
National Basketball Association
National Endowment for the Humanities
The Orentreich Family Foundation
Pfizer Foundation*
Pioneer Investments @
Princeton Clothing Company, Ltd.
Quikbook, Inc.
Roanoke Asset Management Corp.
The Pamela and Richard Rubinstein Foundation
Seventh Masonic District Association, Inc.
Shahid & Co. @
Travel Planners, Inc.
Unalane Foundation
Charlotte & Arthur Zitrin Foundation
Anonymous

Despite our best efforts...poverty persists. Yet just because there have always been poor families doesn't mean their always have to be.



Tributes

Each year, The Children's Aid Society receives many heartfelt gifts in memory of loved ones and in honor of family, friends, or special occasions. These gifts help to ensure that the Society continues its commitment to the well being of the neediest children in New York City.

We are pleased and proud to be a part of these special tributes, and would like to share them with you.

Due to space limitations, we have included only those tributes for which the Society received gifts totaling \$100 or more.

Memorials

Leone Adelson
Edyra Maria Aracena
Mary Asher
Dean R. Avery
Gertrude Brady and her siblings
Diana Buultjens
Kay Coltoff
Mr. and Mrs. Horace Dodds
Lillian Dodge
Naomi Dorum
Elly
Sarah Jane Ehrhardt
Walter Eugene Ericksen
Michael Freedman
Donna Froming
Madeline Shobrys Glosten
David Gottcent
Risa Graubard
Max M. Harrison
Rose Harrison
Elbert Donell Hines, Jr.
Uhuru G. Houston
Evelyn Dowling Hunt
Claire Lynn Jaroff
The father of Martha H. Jewett
Joyce
Haigaz Kaboolian
Shirley Kantrowitz
The Kugel Family
Herbert Kushner
Catherine Locker
Hugh Lofting
George Macotsis
Angelo Mastromartino
John F. McDonell, Jr.

Jeannette Miller
Donald and Elaine Miller
Daniel Nachshen
Helen Newman
Virginia Moffat Nickerson
Amelia O'Hare
John O'Shea
Lewis Parisi
Margaret Anne Parisi
Al Paster
John Quinn
Dorothy Rigby-Knight
Mercedes Rodriguez
Juliette Santangelo
Marie Seaberg
Herbert J. Seligmann
Rosalyn Davis Simmons
Angela Slavin
Eugene Solop
Margaret Sourbeck
Frank Splain
Richard Stauffer
Richard "Wick" Stern
Lily Terasaka
Karen and Dennis Tooby
Harry Trachtenberg
Dorothy Vaughan
Joseph Velsor
Faith Venerable
John K. Vilicich
Sophie White
Alice V.H. Whitley
Karolyn Wiede
Hester Williams
The mother of Ruth E. Wilner

Honorees

Iris Abrons
Jennifer Alley
Friends of Donald E. Anderson
Erika L. Blumberg and Gregg Barron
Mr. and Mrs. John Beres
Amy Bibb
Mr. and Mrs. James Bishop
Mrs. Richard Bloch
Friends of Laurie Brown-Nagin
Lucy Bronson
Barbara Brown
Christine and Tack Burbank
Chapin Lower School
Faculty/Administrative Team
Friends of Barbara Lee Chapman
The Ciewlowski Family
Clients of John V. Cioffi
Clients of Roger V. Coleman
Edith Coltoff
Samuel M. Convissor
Sarah Corwin
James B. Daniels
Friends of Carla Delandri
and her family
Lynn DeNatale
Aldo DeNovellis
Hester Diamond
Judy and Jamie Dimon
and their family
Marla Donovan
Mark M. Edmiston
Mr. and Mrs. Ed Egan
The Fairless Family
Ernestine Feinland



Friends of Jean-Luc Fievet and
 his family
 Clients of Linda Florio
 Clients of Freddie Mac
 Corporation
 Rabbi and Mrs. Gordon Freeman
 Lisa and Marc Friedman
 Jill Frielander
 Michael Gould
 Mr. and Mrs. Marshall M. Green
 Larry Grossman
 Renee Grube
 Colleagues of Benjamin Gutkin
 25 Children by Mr. and Mrs.
 Andre Haddad
 Susan Haff
 Hailey and Morgan Harmon
 Alycen Harrad
 Millie and Allen M. Hart
 Mr. and Mrs. Vince Hatala
 Patricia Helsing
 Jay Heyman
 Roger Hiller
 Gerard Jackson
 C. Lincoln Jewett
 Dorf Kaffl
 Ronald H. Kaufmann
 Mr. and Mrs. Tom Kavalier
 Albert Kirchner
 Ann J. Kugel
 Dr. Michael Leonard
 David Lewis
 Joan Lewis
 Family and friends of Mr. and
 Mrs. Jay C. Lickdyke

Martha Berman Lipp
 Mr. and Mrs. Charles MacRae
 Roger Madoft
 Colleagues of Susan J. Malfa
 Friends and colleagues of James
 S. Malin
 M. R. Matthews
 Barbara and Al McConagha
 Agnes McGarrity
 Juan Mesa
 Clients of Metrovision
 Production Services, Inc.
 Thelma S. Milberg
 Family and friends of Heide and
 Gordon P. Miller
 Jamie Morrell
 Gary T. Murphy
 Melissa Brand Nathan
 Hayley Henderson, Mathew
 Naumann, Emily Naumann
 and John Naumann
 Mr. and Mrs. David Newman
 Friends of Judith Frankfurt and
 James R. Oestreich
 Cathy White O'Rourke
 Mr. and Mrs. Richard Pine
 Juliana Bergman and Matt
 Polazzo
 Colleagues of Carla Potash
 Eileen Whitney and Jerry Portnoy
 Charlton Y. Phelps
 Customers and vendors of
 Quikbook, Inc.
 Jan Raymond
 Max and Sylvia Rosenbach

Serina Rosenbaum
 Mr. and Mrs. Robert Rylee
 Mrs. Donald C. Samuel
 Michael Sands
 Dr. and Mrs. Ben Schnitzer
 Andrew J. Schoen
 Robert Schorr
 Dr. Melissa Sedlis
 Janine Luke and Melvin R.
 Seiden
 The Seliger Family
 Friends and family of Cinda P.
 Siler
 Mr. and Mrs. Scott W. Simmel
 Raizi Simons
 Cody Smith
 Bernice Stern
 Jean L. Stern
 Timothy Jeffrey Sylver
 Clients and vendors of Travel
 Planners, Inc.
 Dorothy M. Urch
 Carol Valentine
 Dr. Neal Vallins
 Clients of Viaggio Incorporated
 Neil Waldman
 Friends and family of Caroline
 and Walter Whetstone
 Ellie Wise
 Devin Yadav

Toys, Books and In-Kind Gifts

We are very grateful to the many, many children, adults and organizations who have supported our annual toy and clothing drives, back to school drives, and Center and Associates Council events with generous gifts of goods and services. Our special thanks to the following supporters...

ABC, Inc. Foundation	First Book
Allied Irish Bank and its Employees	Gail Fogel
Altoids	The Food and Beverage Association of America
American Express Foundation	Forest Industries/Laboratories and its Employees
Anderson Chiropractic Office	Fresh Direct
Angel of Life Foundation	Gap Foundation, Gap Inc. and its Employees
Leslie Hamerschlag and Jaime Arias	Garban Intercapital
Associated Press	Gateway Community Relations
Associates Council of The Children's Aid Society	GE Financial Guaranty Insurance Company and its Employees
Banana Boat	James Gerwin
Banco De Galicia Buenos	Ghurka Collection
Jed Bark	Mr. and Mrs. William R. Goetz
Bellmarc Brokerage, Ltd. and its Tenants	GQ Magazine
Page Bondor	Anne Gruber
Jerry Bortstein	Harman International Industries, Inc.
Boston Properties and its Tenants	Hill, Holliday, Connors, Cosmopolos Inc.
Boys and Girls Club of America	HIP Health Plan of New York
Calvin Klein Cosmetics	Henry H. Hoyt, Jr.
Florence V.G. Carney	Ibiza Store
CBS and its Employees	IBM Corporate Community Relations
Central Credit Union	Imagetech Office Supplies
Children's Blood Foundation	Independence Providers Inc.
The Children's Miracle Network	Indochine
Club ABC Tours	Industrie Wear, LLC
Judith Cohen	Information Builders Inc. and its Employees
Colgate-Palmolive Company	IRS Women's Committee
Columbia Grammar & Preparatory School	Christopher M. Jeffries
Davis, Polk & Wardwell and its Employees	Jo Machinist Architects
Debevoise & Plimpton and its Employees	JPMorgan Chase Bank
Deloitte & Touche and its Employees	Kaloidis School/Hearts of Angels and its Students
Lynne Dobson	Elaine Kaufmann Cultural Center
Darlene Fein	

Another Miracle on Madison Avenue

Each December, the good hearts and generosity of individuals and business owners along Madison Avenue result in an outpouring of cheer, goodwill and funds to The Children's Aid Society for its annual Miracle on Madison Avenue charity shopping event. December of 2002 was no different: 160 stores, art galleries and restaurants donated 20 percent of the day's sales to benefit Children's Aid's health care programs. Senator Charles Schumer, beauty expert Georgette Mosbacher and model Frederique Van Der Wal led the ribbon cutting, and new specialty tents lined the Avenue. We offer deepest thanks to the Madison Avenue Fund for Children, which created the event 16 years ago, as well as to the thousands of shoppers who made the first Sunday in December a very happy one for our children. Join us for the next Miracle Sunday – December 7, 2003.

Ann J. Kugel
Lakeshore Learning Materials
Lynn Lambert
Law and Order and its
Employees
Loews Cineplex Entertainment
Mr. and Mrs. Edward C. Lord
Janine Luke
Anthony Madaia
Madison Square Garden, L.P.
Suzie Maltz
Manhattan Beer Distributors
Jane Mendelson
MetLife Foundation and its
Employees
Morgan Stanley

Nixon Peabody
Ogilvy Public Relations and its
Employees
Old Spice Division of Procter and
Gamble Company
Rachelle Pachtman and Friends
Paper Rock Scissors, Inc.
Paramount Brands/Eber Bros.
The Parenting Group Inc. and its
Employees
Mr. and Mrs. Robert Paul
Pax Wholesome Foods
Pepsi-Cola North America
Pottery Barn
Priority Home Care
Rex Recker

Sports Illustrated
Jean and Robert Stern
Talbot Associates and its
Employees
TIAA-CREF Staff Development
Unit
Ruben Toledo
Tommy Hilfiger Corporate
Foundation
Tower 53 Condominium and its
Tenants
Tower Plaza Associates and its
Tenants
Toys "R" Us
Two Fifth Avenue and its Tenants
UNICEF



The arts at
The Children's
Aid Society are
considered as
important as
our primary
services for
the health,
well being and
success of our
children.



National Basketball Association
NBC Today Show
New Jersey Nets
New York City Sports
Commission
New York Giants, Inc.
New York Jets
The New York Knickerbockers
New York Mets
New York Observer
New York Rangers
New York Stock Exchange
and its Employees
Newsweek, Inc. and its Employees

Ted Redfern
Richards Leeds International
Andrew Richater and Friends
Santa Rivera
Mr. and Mrs. Glenn Robinson
Rossetti Films, Inc.
Tessie Salavantis and Friends
Sandra Cameron Dance Center
and its Students
Ralph Schlosstein
Scholastic, Inc.
Christopher Scott
The Segal Company
Melvin R. Seiden

Unilever
United Skates of America
Jay Weiser
Gigi Wolf
The Woolgathering
World Book Encyclopedia, Inc.
World Soccer Organization
Yogi Berra Museum
David Yurman, Inc. and its
Employees
Zeborg and its Employees

The Children's Aid Society's Services

Adoption and Foster Care

Adoption services, foster parent recruitment and training, medical, therapeutic and emergency foster care, child/family counseling, preventive services.

Arts

AileyCamp, band, chorus, dance, Make-A-Ballet, string orchestra, theater, visual arts.

Camps

Day, residential and winter respite for disabled children, summer and winter, CAS/AileyCamp, special programs for disabled children, learning programs.

Community Centers

After-school and teenage programs, cultural, educational, recreational, social work, medical, dental, mental health, optometry services.

Community Technology Centers

Computer literacy, business applications, Intel Computer Clubhouse, Internet access and skills, web site design and implementation.

Counseling

Academic, art therapy, bereavement, career counseling, groups, psychological, substance abuse, vocational, Family Wellness Program (domestic violence).

Early Childhood Education

Child care, Head Start, Early Head Start, home-based Head Start, nursery school, preschool, literacy.

Education – Community Schools

Academic, cultural, recreational, social work, medical, dental, mental health services, optometry, adult education and programs, at C.S. 61, I.S. 90, I.S. 98, I.S. 190, I.S. 218, P.S. 5, P.S. 8, P.S. 50, P.S. 152, Manhattan Center for Science and Mathematics; Community Schools National Technical Assistance Center at I.S. 218, Economic Empowerment Initiative, New Heights Student-Athlete Program.

Education Services

After-school and weekend programming: educational, recreational, social services, tutoring, college and career preparation, SAT preparation, college scholarships, college support programs, technology centers, adult education.

Health

Medical practices, medical and dental preventive examinations, adolescent medicine, optometry, hearing, HIV/AIDS testing and counseling, immunizations, pediatrics, prenatal care, well-baby care, women's reproductive health and education, dental clinics, Mobile Dental Unit, mental health, facilitated enrollment for children's health insurance.

Housing

Pelham Fritz transitional apartments and supporting services for homeless families, Carmel Hill community renewal project.

Jobs

Internships, summer employment, career readiness, leadership development programs, "Teen Tech" entrepreneurial project, City Challenge, Leadership in Employment and Academics Program (LEAP), Workforce Investment Act (WIA).

Mentoring

Corporate and community volunteer mentors, Project LIVE, Hoop Brothers, SisterNet, Youth Empowerment for Success (YES), New York City Volunteer for Youth Campaign, UKARE.

Nutrition

Education, obesity prevention program, food distribution, nutritional snack and supper programs, special meal programs for homeless children and families.

Prevention

Drug and alcohol abuse education, HIV/AIDS prevention, emergency assistance, counseling, homemaker services, MICA (Mental Illness Substance Abuse), Hope Leadership Academy, Downstate Prevention Resource Center.

Public Policy and Client Advocacy

Benefits advocacy, emergency assistance, research and program development on key issues for disadvantaged children and families.

Teen Pregnancy Prevention

Adolescent sexuality, family life programs, pregnancy prevention, Bernice and Milton Stern National Training Center.

World Trade Center Relief

Long-term financial planning, long-term scholarship assistance, client advocacy.

Youth Development Services

Hope Leadership Academy, community re-entry, City Challenge, New Beginnings, Project LIVE, teen pregnancy prevention, YES mentoring programs.

Youth Mediation and Court Diversion

Community re-entry program, PINS program (Persons in Need of Supervision), diversion and technical assistance, youth violence prevention, teen "peace teams," juvenile justice aftercare.



The Children's Aid Society's Locations

Administrative Offices

Executive Headquarters
Administrative Staff
City and Country Branches
Community Schools
Early Childhood Education
Fiscal Offices
Fundraising and
Public Relations
Human Resources
Office of Public Policy and
Client Advocacy
 105 East 22nd Street
 New York, NY 10010
 (212) 949-4800
 Fax (212) 460-5941

Lord Memorial Building
Adoption Services
Counseling and Home-
Based Services
Dental Services
Foster Care
Health Services
Homemaker Services
Mental Health Services
World Trade Center
Relief Team
 150 East 45th Street
 New York, NY 10017
 (212) 949-4800
 Fax (212) 682-8016

In All Boroughs

Mobile Dental Van
 (347) 672-3998

In Manhattan

Carmel Hill Project
 69 West 118th Street, Suite 1W
 New York, NY 10026
 (212) 423-5806
 Fax (212) 423-0328

Drew Hamilton
Learning Center
 2672 Frederick Douglass Blvd.
 at 142nd Street
 New York, NY 10030
 (212) 281-9555
 Fax (212) 862-6161

Dunlevy Milbank Center
Community Re-entry Program
 14-32 West 118th Street
 New York, NY 10026
 (212) 996-1716
 Fax (212) 996-1230
Milbank Medical Group
 (212) 369-8339
 Fax (212) 360-0030

Dyckman Houses
Community Center
Dyckman Houses
Boys & Girls Club
 3782 Tenth Avenue
 New York, NY 10034
 (212) 567-8782
 Fax (212) 567-8782

East Harlem Center
 130 East 101st Street
 New York, NY 10029
 (212) 348-2343
 Fax (212) 876-0711

Frederick Douglass Center
Intel Computer Clubhouse
 885 Columbus Avenue
 at 104th Street
 New York, NY 10025
 (212) 865-6337
 Fax (212) 864-7771

Greenwich Village Center
 219 Sullivan Street
 New York, NY 10012
 (212) 254-3074
 Fax (212) 420-9153
CAS Choruses
 (212) 533-1675
 Fax (212) 533-7519

The Hope Leadership
Academy
 1732 Madison Avenue
 at 114th Street
 New York, NY 10029
 (212) 987-5648
 Fax (212) 534-5221

I.S.90 Community School
CAS/AileyCamp
 21 Jumel Place at 168th Street
 New York, NY 10032
 (212) 923-1563
 Fax (212) 923-1859

I.S.218 Community School
 4600 Broadway at 196th Street
 New York, NY 10040
 (212) 569-2880
 Fax (212) 304-3427
Community Schools National
Technical Assistance Center
 (212) 569-2866
 Fax (212) 544-7609

Manhattan Center for Science
and Mathematics
 280 East 116th Street @ FDR
 Drive, Room B13
 New York, NY 10029
 (212) 423-9630
 Fax (212) 423-1101

Pelham Fritz Transitional
Apartments
 17-21 West 118th Street
 New York, NY 10026
 (212) 348-5356
 Fax (212) 348-5477

PINS (Persons In Need of
Supervision) Program
Manhattan Unit
PINS Preventive
Services/Diversion/Technical
Assistance
YES Mentoring Program
 60 Lafayette Street
 New York, NY 10013
 (212) 619-0383
 Fax (212) 513-1695

P.S. 5 Community School
 3703 Tenth Avenue
 at Dyckman Street
 New York, NY 10034
 (212) 567-5787
 Fax (212) 567-5966

P.S. 8 Community School
 465 West 167th Street
 New York, NY 10032
 (212) 740-8655
 Fax (212) 740-7420

P.S. 50 Community School
 433 East 100th Street
 New York, NY 10029
 Phone (212) 860-0299
 Fax (212) 860-2845

P.S.152 Community School
 93 Nagle Avenue
 New York, NY 10040
 (212) 544-0221
 Fax (212) 544-0244

Rhineland Center
 350 East 88th Street
 New York, NY 10128
 (212) 876-0500
 Fax (212) 876-9718
Stern National Adolescent
Sexuality Training Center
 (212) 876-9716
 Fax (212) 876-1482

Taft Houses Early
Childhood Center
 1724-26 Madison Avenue
 at 114th Street
 New York, NY 10029
 (212) 831-0556
 Fax (212) 426-0611

In the South Bronx

Bronx Family Center
Foster Care and Preventive
Services
Community Health and
Dental Services
 1515 Southern Boulevard
 Bronx, NY 10460
 (718) 589-3400
 Fax (718) 589-3343
Early Childhood Center
 (718) 620-1200
 Fax (718) 893-3664

Community School P.S. 61
Community School I.S. 190
 1550 Crotona Park East
 Bronx, NY 10460
 (718) 991-2719/8023
 Fax (718) 991-7555

I.S. 98 Community School
 1619 Boston Road
 Bronx, NY 10460
 (718) 842-2760
 Fax (718) 842-2793

In Brooklyn

PINS (Persons In Need of
Supervision) Program
Brooklyn Unit
PINS Preventive Services/
Diversion/Technical Assistance
YES Mentoring Program
 175 Remsen Street, 7th Floor
 Brooklyn, NY 11201
 (718) 625-8300
 Fax (718) 858-8234

Juvenile Justice Aftercare Project
City Challenge Program for
Adjudicated Youth
 272 Jefferson Avenue
 Brooklyn, NY 11216
 (718) 638-2525
 Fax (718) 638-7005

In Staten Island

Goodhue Center
William Osborn Day Camp
 304 Prospect Avenue
 Staten Island, NY 10301
 (718) 447-2630
 Fax (718) 981-3827

In Westchester

Wagon Road Camp
Summer Day Camp
Winter Respite Camp
 431 Quaker Road
 Chappaqua, NY 10514
 (914) 238-4761
 Fax (914) 238-0714

Trustees, Local Board Members and Key Staff



OFFICERS

John S. Griswold
Mrs. Stowe C. Phelps
Honorary Chairmen
Edward M. Lamont
Chairman Emeritus
Edgar R. Koerner
Chairman
Angela Diaz, M.D.
Senior V.P.
Joseph Bragg
Samuel M. Convissor
Judith K. Dimon
Martha B. McLanahan
Vice Presidents
Sheila Baird
Treasurer
Marshall M. Green
Secretary
Philip Coltoff
*Assistant Secretary/
Treasurer and CEO*

TRUSTEES

Iris Abrons
Marc Broxmeyer
Anne Jeffries Citrin
Susan Coupey, M.D.
Gloria M. Dabiri
Mark M. Edmiston
Mimi Fischbein
Desmond G. FitzGerald
Mrs. Robert M. Gardiner
Murray Gartner
Maeva Gyenes
Peter Hanson
Lolita K. Jackson
Christopher M. Jeffries
Ronald H. Kaufmann
Mrs. George A. Kellner
Mrs. Thomas J. LaMotte
Martha Berman Lipp
Sharon Madison
Richard H. Mangum
Alan Roberts McFarland
Richard E. Meyer
Felix A. Orbe
Mrs. Frederic W. Parnon
Angelene Varick Pell
Calvin Ramsey
Charles J. Roussel
Mrs. Peter Rugg
Melvin R. Seiden
Virginia M. Sermier

Arthur F. Smith
John W. Spurdle, Jr.
Rosalie K. Stahl
David Stein
Jean L. Stern
Mrs. Milton Stern
James H. Vaughn
Richard M. Waterman
Robert Wolf

ADVISORY COUNCIL

Arlene Adler
Sandra L. Ahman
Jennifer Alley
Juliann F. Cannilla
Elly Christophersen
Bart J. Eagle
Mrs. Frederick Hurd
Lane H. Katz
Bogart R. Leashore
Spencer Scott Marsh, III
R. Gaynor McCown
Richard Meyer
Roger C. Ravel
Franklin R. Saul
Kevin J. Watson
Barbara Yastine

ASSOCIATES COUNCIL

Sandra L. Ahman
Chairman
Heidi Thompson
President

EXECUTIVE STAFF

Philip Coltoff
Chief Executive Officer
C. Warren Moses
Executive Director
Herman Bagley
*Assistant Executive Director
for Community Affairs*
David L. Fazio
Chief Financial Officer
Patricia M. Grayson
*Assistant Executive Director
for Development*
Truda C. Jewett
*Assistant Executive Director
for External Affairs*
Lorna Palacio Morgan
Chief of Operations

Jane Quinn
*Assistant Executive Director
for Community Schools*
Harvey Robins, Ph.D.
*Assistant Executive Director
for Policy and Planning*
Michael A. Carrera, Ed.D.
*Director, Bernice and Milton
Stern National Adolescent
Sexuality Training Center*
Janet Sellwood
Director, Human Resources
Jose D. Alfaro
Director, Employee Relations
Beverly A. Colon, R.P.A.-C.
*Director, Health
Services Division*
Gary Dawyot
Chief Engineer
Leslie Dayton
*Director, Foundation &
Corporate Gift Giving*
Ofelia DeCarlos
Comptroller
Christine E. Donovan
Director, Volunteer Services
Barry Donsky
*Director of Government
Contracts & Fiscal Services*
Jan Flory
Director of Services
Gary Kromirs
*Director, Information
Technology*
James H. Langford
Manager, Quality Assessment
Ellen Lubell
Director, Public Relations
Douglas Marino
Business Manager
Susan Melnyk
Director, Special Events
Cathy White O'Rourke
*Associate Director of
Development*

OFFICE OF PUBLIC POLICY AND CLIENT ADVOCACY

Cathleen Clements, Esq.
Director
Johnnymae Williams-Gales
*Coordinator, Advocacy and
Training*

PROGRAMS AND SERVICES

City and Country Branches

Vito Interrante
Associate Director for Program
William Weisberg
*Associate Director
for Administration*
Risa Young
*Director, Early Childhood
Programs*
Gloria Daniels
Director, Contract Management
Cornelius Jeter
Director, New Beginnings
Sandra Morales
*Director, Downstate
Prevention Resource Center*
Michael Roberts
*Director, Violence and Substance
Abuse Prevention Programs*
Tanya Ramos
*Program Director, College
Scholarship Support Program
& Economic Empowerment
Initiative*
Linda Rodriguez
Director, Head Start
Andrew Seltzer, Ed. D
*Director, Head Start
Social Services*

Community Schools

Richard Negrón
Director, Community Schools
Alma Whitford
*Assistant Director,
Community Schools*
Sarah Jonas
*Director, Curriculum and
Program Design*

Technical Assistance – Community Schools

Jane Quinn
*Director, National Technical
Assistance Center for
Community Schools*
Hersilia Mendez
*Assistant Director, National
Technical Assistance Center
for Community Schools*

Counseling and Home-Based Services

Michele Dubowy
Director, PINS Programs
Felipe Franco
Director, Community Re-entry Program
Alirio H. Guerrero
Director, Preventive Services
Marquette Howse
Coordinator, City Challenge
Mary Hutson
Director, Homemaker Services
Janice Jones
Coordinator, Neighborhood Youth Employment Program
Kerry Moles
Director, Family Wellness Program
Robert Turner
Director, Mental Health Services

Foster Care/Adoption Services

Jane Golden
Director, Foster Care/Adoption Services
Maria Burgos
Director, Medical Foster Care Program
Marilyn Johnson*
*Director, Permanency Planning *through April 2003*
Eleanor Katz
Director, Therapeutic Programs
Margaret Bennett
Director, Quality Improvement
Michael Navas
Administrative Supervisor, Teen Programs

Health Services

Angela Diaz, M.D., M.P.H.
Health Services Consultant, Mount Sinai Medical Center
Beverly Colon, R.P.A.-C.
Director of Health Services
Paula Elbirt, M.D.
Medical Director
Robert Oswald, M.S.F.S.
Director, Health Administration
Scott Bloom, M.S.W.
Director, Mental Health, School-based Health Clinics
Kate Lawler, M.P.H.
Director, Health Care Access Program
Murray Rosenthal, D.D.S.
Director, CAS Dental Services
Laura DeCarlo, R.D.H.
Dental Administrator, CAS Dental Clinics
Patricia Devescovi, B.S.
Director, Health Revenue and Data
Toni DeNicola, P.N.P.
Administrator, School-Based Health Centers
Cindy Meltzer, M.S.W.
Manager, External Contracts

Stern National Adolescent Sexuality Training Center

Michael A. Carrera, Ed. D.
Director
Gregory Denizard
Senior Implementation Manager
Courtney Carrera
Implementation Manager

Erica Glass-Gordon
Implementation Manager
Jill Eisenhard
Implementation Manager
Gilbert Agosto
Program Director, Community School C.S. 61/I.S. 190
Luis Gratereaux
Program Director, Community School I.S. 218
Ruben Padilla
Program Director, Community School I.S. 90

SITE DIRECTORS

Bronx Family Center

Sandy Gutierrez
Bronx Regional Director

Carmel Hill Project

Ann Hamm, *Director*

CAS/AileyCamp

Nasha Thomas-Schmitt
Director

CAS Choruses

Elizabeth Parker
Director of Music

City Challenge and Juvenile Justice Aftercare Project

Felipe Franco, *Director*

Community School C.S. 61±

Tisha Jermin, *Director*
Patricia Quigley, *Principal*

Community School I.S. 90

Gloria Lopez, *Director*
Janet Heller, *Principal*

Community School I.S. 98

Jacquy Joachim
Program Director
Andrew Geller, *Principal*

Community School I.S. 190±

Tisha Jermin, *Director*
Diana Alvarez, *Principal*

Community School I.S. 218

Rosa Bautista, *Director*
Luis Malavé, *Principal*

Community School P.S. 5

Myrna Torres, *Director*
Wanda Soto, *Principal*

Community School P.S. 8

Maria Morris, *Director*
Carol Rubin, *Principal*

Community School P.S. 50

Elizabeth O'Flanagan
Director
Lyle Walford, *Principal*

Community School P.S. 152

Aleida Kimmel, *Director*
Rosa Blanch, *Principal*

Downstate Prevention Resource Center

Sandra Morales, *Director*

± *Two schools operate in one building*

On a typical school and work day, our after-school programs and our child care, nursery school and early childhood programs serve close to 15,000 children.



**Drew Hamilton
Learning Center**
Michelle Wilson, *Director*

Dunlevy Milbank Center
Wayne Dawson, *Director*

**Dyckman Houses
Boys & Girls Club**
Elouise Whitehurst
Acting Director

East Harlem Center
Carmen La Luz-Rivera
Director

Frederick Douglass Center
Michelle James, *Director*

**Goodhue Center/
Osborn Day Camp**
Ilene Pappert, *Director*

Greenwich Village Center
Steve Wobido, *Director*

**The Hope Leadership
Academy**
Michael Roberts, *Director*

**Manhattan Center for
Science & Mathematics**
Kim Hensley, *Director*
Steve Askinazi, *Principal*

**Pelham Fritz
Transitional Apartments**
Felicia Cruickshank, *Director*

Rhineland Center
Catherine Barufaldi, *Director*

**Stern National Adolescent
Sexuality Training Center**
Michael Carrera, Ed. D.
Director

**Taft Early Childhood
Center**
Beverly Largie, *Director*

Wagon Road Camp
Vincent Canziani, *Director*

COMMUNITY ADVISORY BOARDS

Dunlevy Milbank Center

Melissa Benjamin
Donna Marie Chandler
Dawn Dickerson
Paul Dunn
Darcie Friscoe
David Johnson
Irene Lewis
Barbara Samuels
Linda Steward
Deborah Waymer
Rev. Bernard Woodside

East Harlem Center

Julio Agosto
Eric Canales
Evelyn Castro
Sheila Corrales
Dr. Georgina Falu
Denise Jerez
Ann J. Kugel
Carla E. Godoy Laguna
Luis Mendoza
Jaqueline Padilla
Ana Quinones-Llaneras
Fernando Lopez
Ivis Sebus-Sampayo
Denise Taylor

Frederick Douglass Center

John Acevedo
Chan Bass
Joseph Bragg
Carol Dorch
Vernon Douglas
Quentin Fletcher
Rafael Flores
Mable Haddock
William Hamer
Elaine Lugovoy
Laura Nurse
Debra Reifs
Betty Leacock-Taylor
Andrea Thomas
Dwayne Verley
Leslie Wyche

Goodhue Center

Jeni Acciavatti
John Baeszler
Charles Cerna
Victor Cocozziello
Lindy Crescitelli
Walter J. Dooley
Erica Greenbaum
Robert Helbock, Jr.
James Hogan
Thomas LaManna
Louis Lombardo
Frank Mannino
Mrs. Wilma J. Meyers

Kenneth Mitchell
Hon. William L. Murphy
Charles Orlando
Inez Palladino
Edward W. Pizzo, D.D.S.
Peter E. Schwimer
Madeline Sliger

Greenwich Village Center

Abbe Aronson
Nasim Alikhani
Meilyn Chapman
Jessica Glassman
Adrienne Zicklin Kanter
Sharon Katzoff
Laura Colin Klein
Natasha Rabin

Rhineland Center

Arlene Adler
Michele Blumberg
Abe Borenstein
Harold Bornstein
Julia Brennan
Jody Falco
Felice Farber
Mimi Fischbein
David Gingold
Beth Grossman
Steven Lampe
Randie Malinsky
Barbara Marcato
Michael McMurray
Charlotte Prince
Virginia M. Sermier
Melissa Stoller

Pelham Fritz Apartments

Herman Bagley
Joseph Bragg
Peggy Anne Dineen
Sharon Madison
Elizabeth Maier
Richard H. Mangum
Margaret J. McKinley
Charlotte Fritz Milan
Felix A. Orbe
Stacey Waggoner

Chorus Advisory Council

Charmane Bembury
Edward Blatz
Ken Dake
Leslie Dayton
Chris Hawkins
Ann J. Kugel
Esther Liu-Harris
Caryn Feinberg
Graham Parker
Maizie Peterson
Michael Seitz
Sue Spiner

Head Start Parents Advisory Council

Jocelyn Chicon
Jchemela Holmes
Maria Pimentel
Sherrie Polk
Ariane Richardson
Tabatha Serrano
Marisol Soto

Community School District 4

Evelyn Castro
Superintendent

Community School District 6

Dr. Jorge Izquierdo
Superintendent

Community School District 12

Althea Serrant
Superintendent

PROGRAM ADVISORY COMMITTEES AND CHAIRS

Arts

Mrs. Peter Rugg, *Chair*

City and Country Branches

Felix A. Orbe, *Chair*

Development

Martha B. McLanahan, *Chair*

Education

Judith K. Dimon, *Chair*

Foster Care/Adoption and Counseling/ Home-Based Services

Richard H. Mangum
Mrs. Frederic W. Parnon
Angelene Varick Pell
Co-Chairs

Health Services

Susan Coupey, M.D., *Chair*

Investments

Sheila Baird, *Chair*

Mental Health

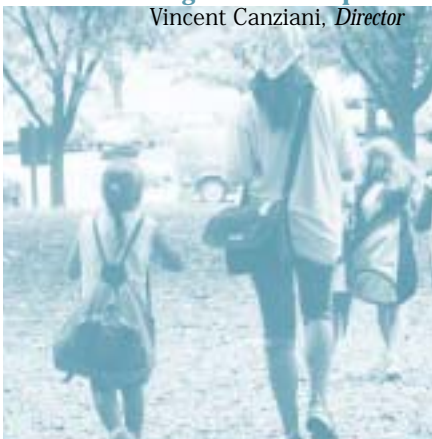
Mrs. George A. Kellner, *Chair*

Pension and Personnel Practices

Murray Gartner, *Chair*

Volunteers

Peter Hanson, *Chair*



A Note from the Executive Director

While we have always been proud of our exceptionally capable and professional staff members, the challenges of the last two years – from the World Trade Center attack of 2001 to the blackout of 2003 – have shown them to be extraordinary.

Beginning with the tragic events of September 11th, our staff showed tremendous courage, resourcefulness and resiliency. Even now, two years after the marathon days and nights of emergency assistance and support, our social workers and case managers are still running support groups for workers frustrated by the lack of employment opportunities and for victim families mired in mourning while also managing their long-term financial arrangements – and those of their children.

Only two months later in 2001, when American Airlines Flight 587 crashed in the Rockaways on its way to the Dominican Republic, our staff again showed its ability to cope with a major disaster for our families, not only reaching out with caring support, but also extending the emergency financial assistance and crisis counseling services we had established for 9/11 to the

families reeling from the crash.

As this report was being produced in August, the biggest blackout in North American history struck, and again our staff responded immediately and intuitively. Social workers and camp counselors spent much of the night making sure children arrived home safely and helping families stay cool and calm. In the morning, they opened our schools and community centers and helped restore a sense of normalcy.

We need no further evidence to understand that our staff serve as unofficial emergency workers in times of city crisis. Our mission demands this commitment – and it will continue in years to come.



C. Warren Moses
Executive Director



Member



BOYS & GIRLS CLUBS
OF AMERICA

Boys & Girls Clubs of America
1230 West Peachtree Street, NW
Atlanta, GA 30309
(404) 487-5700



The Children's Aid Society
105 East 22nd Street
New York, NY 10010
(212) 949-4800
www.childrensaidsociety.org

*On February 6, 2003,
the Empire State Building
glowed blue and white in honor
of The Children's Aid Society's
150th anniversary*

